

Power Mod™

Commercial Lever Bypass meter stacks (type WML) are designed to meet the requirements of those utilities specifying lever bypass meter sockets for residential and commercial applications.

Features include:

- QuickSystem™ features
- High-quality, time-proven Landis & Gyr HQ sockets
- A line of 3-phase 100 Amp meter stacks to minimize tenant main cost
- Removable back knockout plate to facilitate wiring
- 225 Amp capability in single and three phase designs
- Up to 4 positions with 225 Amp tenant mains, up to 2 positions with 400 Amp tenant mains
- Ease of wiring – tenant mains require only a single bend

Lever Bypass quick reference

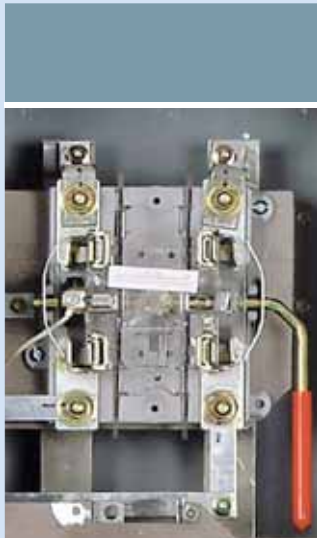
- 100A/225A 1-4 position
- 400A 1-2 position
- 1200A thru-bus rating
- UL Standard # UL67
- UL file # E27100
- AIC rating (25K, 65K & 100K)
- Voltage
 - Single phase 120/240V AC max
 - Three in single phase out 208Y/120V AC
 - Three Phase 240V AC max
- All swing latches and rivets are stainless steel.
- NEMA 3R rated
- G90 Galvanized Steel
- ANSI 61 Paint



Lever Bypass Meter Stacks

Power Mod: Lever Bypass

Features



Reduced height for increased utility acceptance

High quality Landis & Gyr HQ lever bypass block



Horizontal breaker mounting
Reduces installation time and effort for 3-phase installations



Single phase installations feature the QS breaker which allows 125 or 225 breaker flexibility without sacrificing cost



Barrel lock capable covers
Accepts common utility barrel locks to protect against unauthorized usages



Neutral lugs centrally located



Power Mod: Lever Bypass

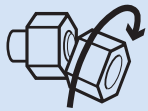
Features



Siemens
exclusive
feature

QuickConnect™

QuickConnect reduces bussing connections from many to one- ensuring a single reliable connection instead of multiple connections.



QuickTorque™

Eliminates the need for time consuming torque readings, this breakaway nut provides the correct indication of torque of the QuickConnect. When tightened, the outer head twists off at the proper torque for connection, leaving a single nut for future maintenance.



Siemens
exclusive
feature

QuickBolt™

QuickBolt eliminates the requirement to line up mechanical connections- instead bolts remain retracted until the openings lineup - allowing the bolts to protrude through automatically. Springs push the bolts through and provide positive pressure to keep bolts in place while wingnuts are attached and tightened.



Tin plated copper bus straps



Mounting ear

Pivot factory installed mounting ears to minimum or maximum position to provide additional stability when mounting equipment onto wall.



Siemens
exclusive
feature

QuickRoll™

QuickRoll eliminates the typical metal brackets for mounting modules to the wall. Instead of metal scraping metal QuickRoll allows the module to glide down the mounting rail via a durable nylon wheel inside mounting bracket.

Power Mod: Lever Bypass

Catalog numbers

Commercial Meter Stacks: Lever Bypass

Catalog number	Meter positions per stack	Max. tenant breaker (Amps)	Breaker Provisions	Maximum AIC ^③	Dimensions (inches) ^①			Stack phasing phases/sockets ^②	KO drawing no.
					Height	Width	Depth		

1-phase, 3-wire SN, incoming and outgoing, ringless type lever bypass, 5-jaw sockets^②

WML11225RJ	1	225	QS, QSH, QSHH, HQS, HQSH, QP, QPH, HQP, MP-T, MP-HT, MP-MT	100,000	27.75	19.50	9.00	–	L-1
WML21225RJ	2			100,000	40.75	19.50	9.00	–	L-2
WML31225RJ	3			100,000	49.75	19.50	9.00	–	L-3
WML41225RJ	4			100,000	62.75	19.50	9.00	–	L-4
WML11400RJ ^④	1	400	JXD62B400 Factory inst	25,000	44.00	16.31	9.69	–	L-5
WML21400RJ ^④	2			25,000	70.38	23.00	9.69	–	L-6

3-phase, 4-wire SN, incoming and 1-phase, 3-wire SN outgoing, ringless type lever bypass, 5-jaw sockets^②

WML12225RJ	1	225	QS, QSH, QSHH, HQS, HQSH, QP, QPH, HQP, MP-T, MP-HT, MP-MT	100,000	27.75	19.50	9.00	1-AB	L-1
WML22AB225RJ	2			100,000	40.75	19.50	9.00	1-AC, 1-BC	L-2
WML22BC225RJ	2			100,000	40.75	19.50	9.00	1-AC, 1-AB	L-2
WML22CA225RJ	2			100,000	40.75	19.50	9.00	1-AB, 1-BC	L-2
WML32225RJ	3			100,000	49.75	19.50	9.00	1-AB, 1-BC, 1-CA	L-3
WML42AB225RJ	4			100,000	62.75	19.50	9.00	2-AB-, 1-BC, 1-CA	L-4
WML42BC225RJ	4			100,000	62.75	19.50	9.00	1-AB, 2-BC, 1-CA	L-4
WML42CA225RJ	4			100,000	62.75	19.50	9.00	1-AB, 1-BC, 2-CA	L-4
WML12400RJ ^④	1	400	JXD62B400 Factory Inst	25,000	44.00	16.31	9.69	1-AB	L-5
WML22400RJ ^④	2			25,000	70.38	23.00	9.69	1-AB, 1-BC	L-6

① Dimensions shown are representative of outside box dimensions and do not include allowances for mounting bumps, hubs, or hardware protrusions.

② Not for use on 3-phase, 4-wire delta systems

③ Max AIC determined by maximum AIC of tenant breakers when used in conjunction with a meter socket. Higher overall ratings may be achieved through approved series rating combinations.

④ Alternate amperage breakers are available. Please see table on right for suffix that needs to be added. Additional lead time may apply. Contact sales office for details.

⑤ Commercial Stacks are not field phaseable at this time.

Add Suffix ➤	1 Meter Position Per Stack	Breaker Amperage
	T1	200A
	T2	250A
	T3	300A
	T4	350A

Alternate amperage breakers

Add Suffix ➤	2 Meter Positions Per Stack	Breaker Amperage
	T5	200A/200A
	T6	200A/250A
	T7	200/300A
	T8	200/350A
	T9	200/400A
	T10	250A/300A
	T11	250A/350A
	T12	250A/400A
	T13	300A/300A
	T14	300A/350A
	T15	300A/400A
	T16	350A/350A
T17	350A/400A	

Power Mod: Lever Bypass

Catalog numbers

Commercial Meter Stacks: Lever Bypass

Catalog number	Meter positions per stack	Max. tenant breaker (Amps) ^③	Breaker provisions	Maximum AIC ^③	Dimensions (inches) ^①			KO drawing no.
					Height	Width	Depth	
3-phase, 4-wire SN, incoming and outgoing, ringless type lever bypass, 7-jaw sockets^⑤								
WML13100RJ ^②	1	100	QP, MP-T, QPH, MP-HT, HQP, MP-MT	65,000	27.75	23.50	9.00	L-7
WML23100RJ ^②	2			65,000	40.75	23.50	9.00	L-8
WML33100RJ ^②	3			65,000	49.75	23.50	9.00	L-9
WML43100RJ ^②	4			65,000	62.75	23.50	9.00	L-10
WML13225RJ	1	225	QJ2, QJH2, QJ2H, HQJ2H, MQ, MQH, MQL	100,000	27.75	23.50	9.00	L-11
WML23225RJ	2			100,000	40.75	23.50	9.00	L-12
WML33225RJ	3			100,000	49.75	23.50	9.00	L-13
WML43225RJ	4			100,000	62.75	23.50	9.00	L-14
WML13400RJ ^②	1	400	JXD638400 Factory Inst	25,000	44.00	16.31	9.69	L-5
WML23400RJ ^②	2			25,000	70.38	23.00	9.69	L-6

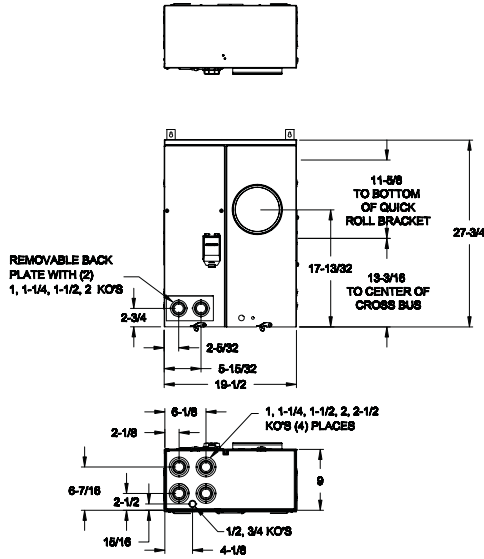
- ① Dimensions shown are representative of outside box dimensions and do not include allowances for mounting bumps, hubs, or hardware protrusions.
- ② 3-pole breakers only
- ③ Max AIC determined by maximum AIC of tenant breakers when used in conjunction with a meter socket. Higher overall ratings may be achieved through approved series rating combinations.
- ④ Alternate amperage breakers are available. Please see below table for suffix that needs to be added. Additional lead time may apply. Contact sales office for details.
- ⑤ Rated for use with 240/120V Delta systems

Alternate amperage breakers

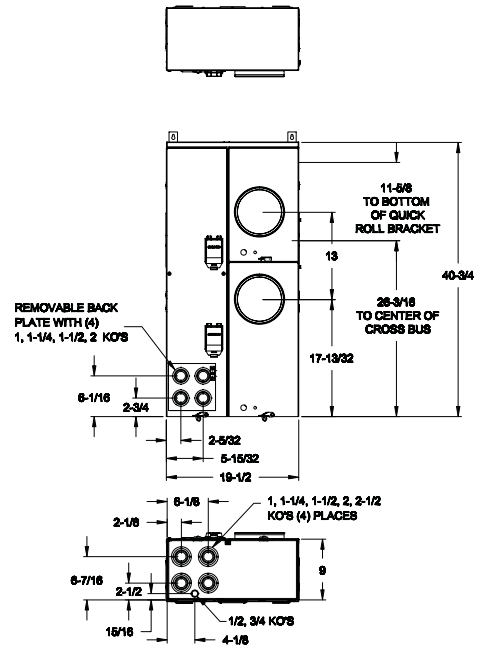
Add Suffix ➔	1 Meter Position Per Stack		Add Suffix ➔	2 Meter Positions Per Stack	
		Breaker Amperage			Breaker Amperage
	T1	200A		T5	200A/200A
	T2	250A		T6	200A/250A
	T3	300A		T7	200/300A
	T4	350A		T8	200/350A
				T9	200/400A
				T10	250A/300A
				T11	250A/350A
				T12	250A/400A
				T13	300A/300A
				T14	300A/350A
				T15	300A/400A
				T16	350A/350A
				T17	350A/400A

Power Mod: Lever Bypass

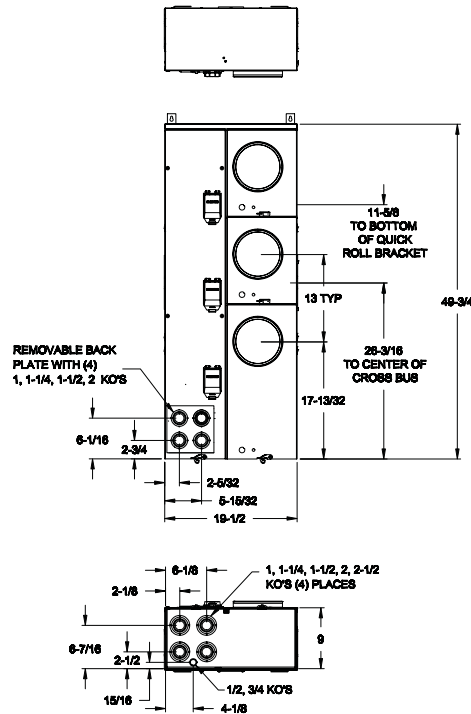
Knockout diagrams



L-1	
WML11225RJ	WML12225RJ



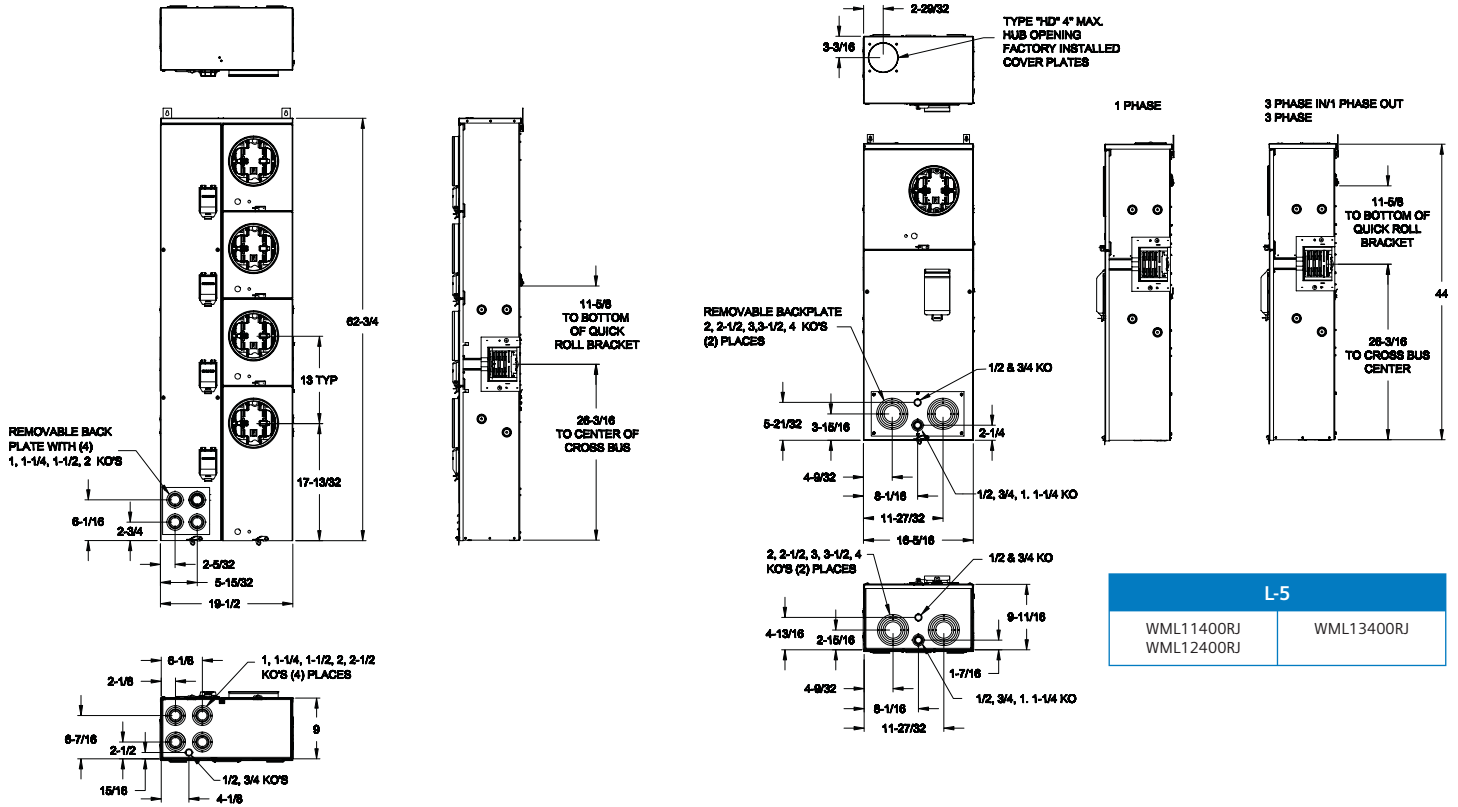
L-2	
WML21225RJ	WML22BC225RJ
WML22AB225RJ	WML22CA225RJ



L-3	
WML31225RJ	WML32225RJ

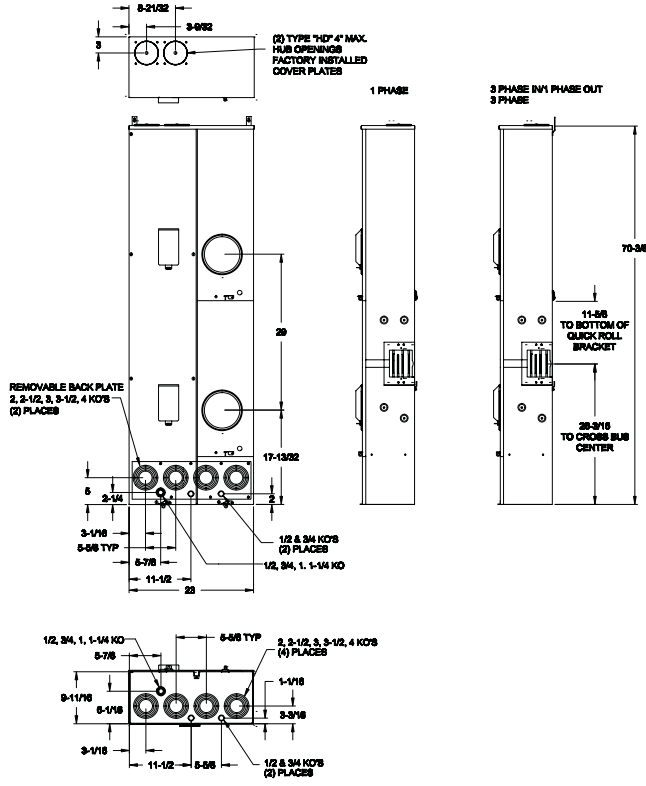
Power Mod: Lever Bypass

Knockout diagrams



L-5	
WML11400RJ WML12400RJ	WML13400RJ

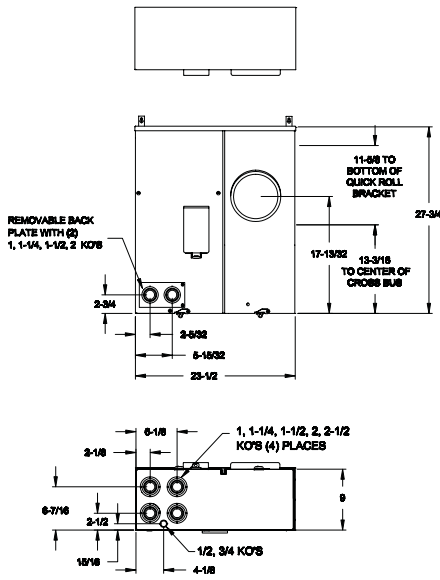
L-4	
WML41225RJ WML42AB225RJ	WML42BC225RJ WML42CA225RJ



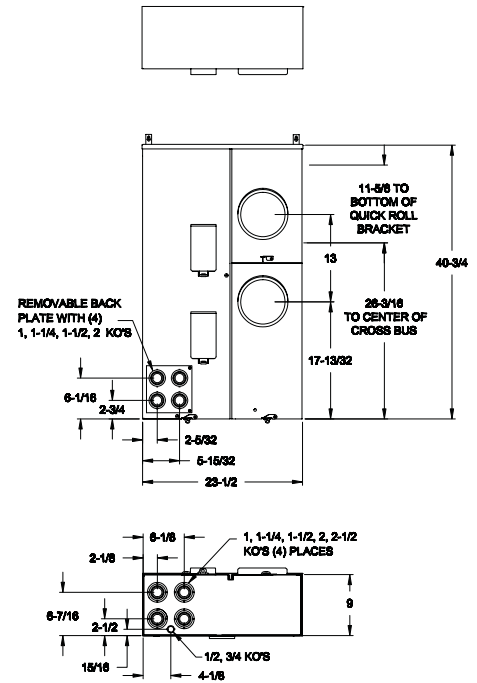
L-6	
WML21400RJ WML22400RJ	WML23400RJ

Power Mod: Lever Bypass

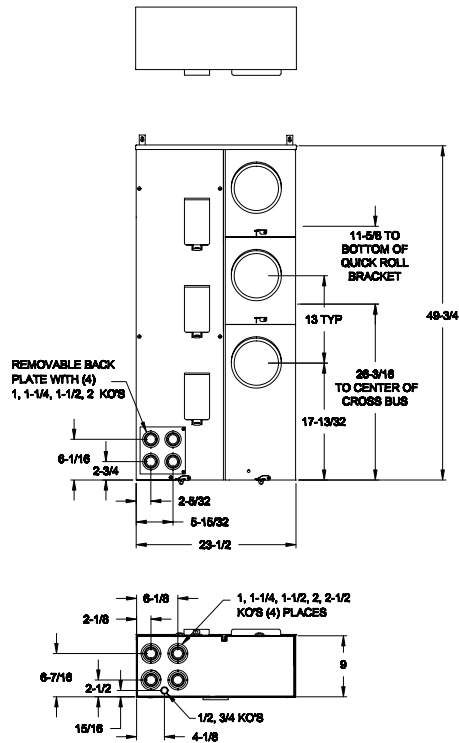
Knockout diagrams



L-7
WML13100RJ



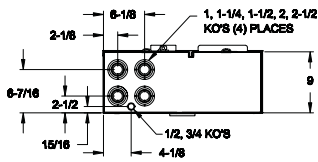
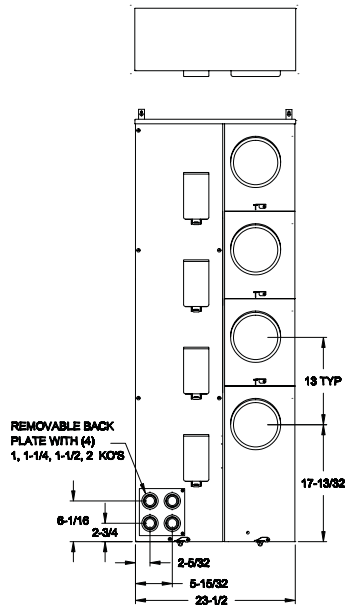
L-8
WML23100RJ



L-9
WML33100RJ

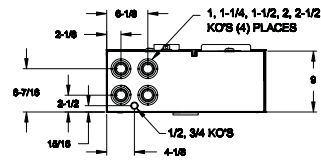
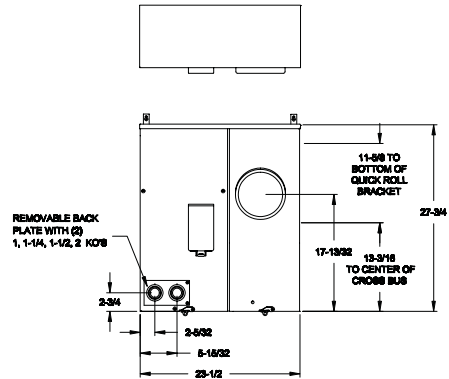
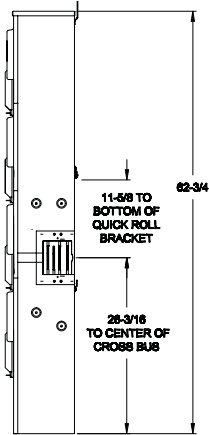
Power Mod: Lever Bypass

Knockout diagrams



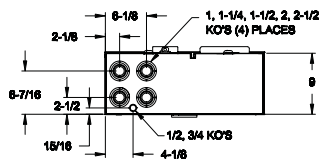
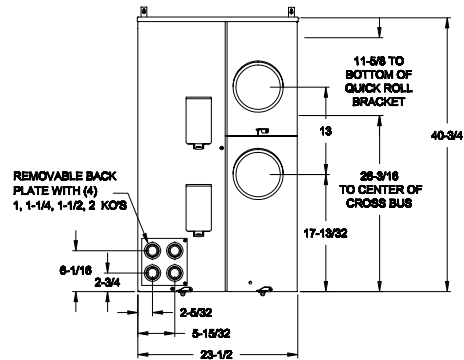
L-10

WML43100RJ



L-11

WML13225RJ

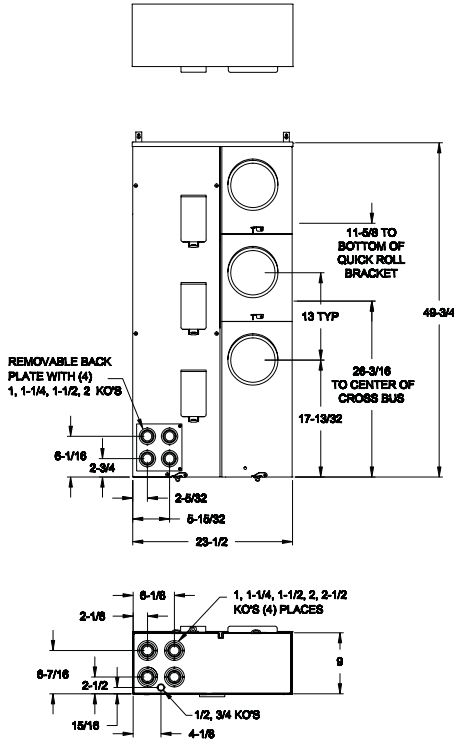


L-12

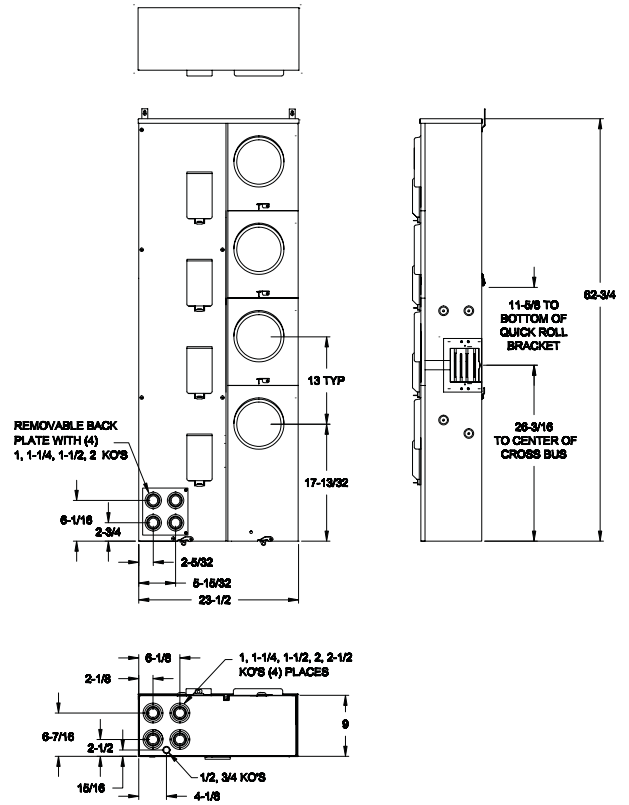
WML23225RJ

Power Mod: Lever Bypass

Knockout diagrams

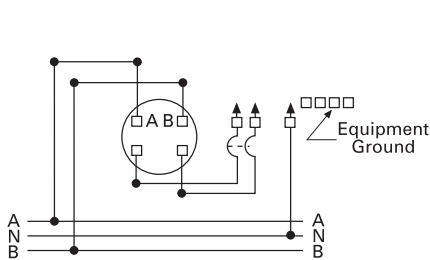


L-13
WML33225RJ

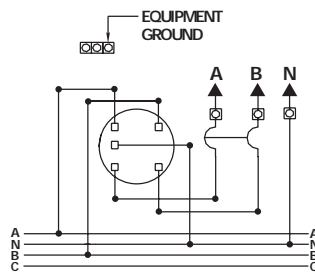


L-14
WML43225RJ

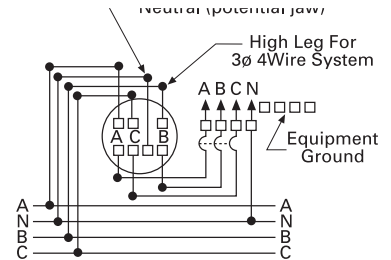
Schematics



WML11400RJ



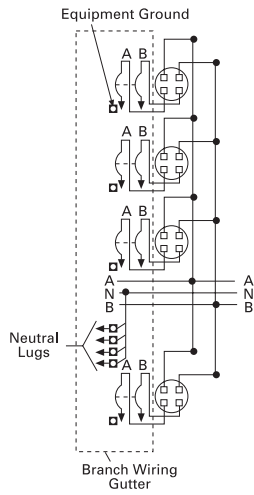
WML12400RJ



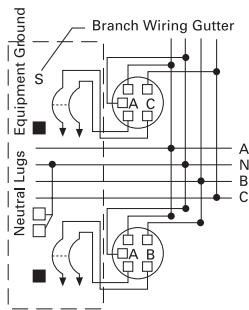
WML13400RJ

Power Mod: Lever Bypass Schematics

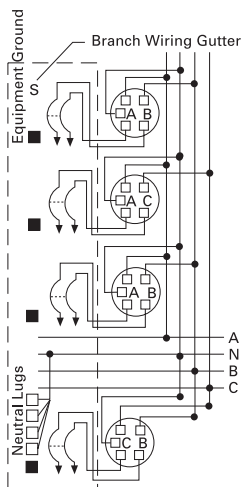
1-Phase Incoming & Outgoing



WMLX1225RJ

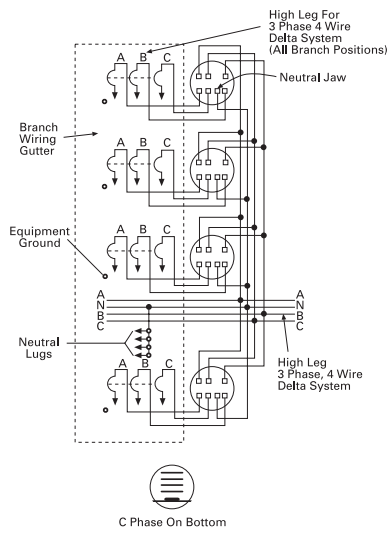


WML22BC225RJ

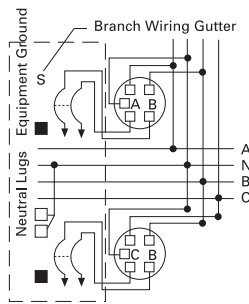


WML42AB225RJ

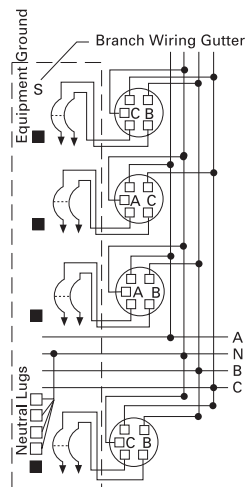
3-Phase Incoming & Outgoing



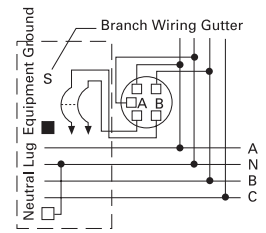
WMLX3100RJ
WMLX3225RJ



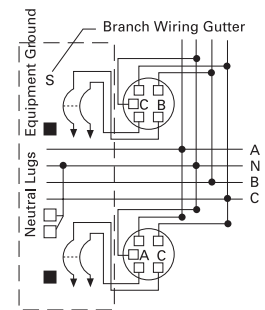
WML22CA225RJ



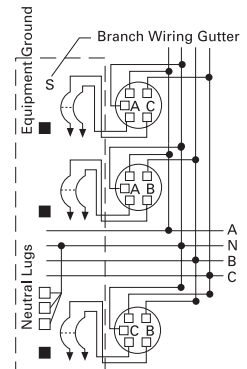
WML42BC225RJ



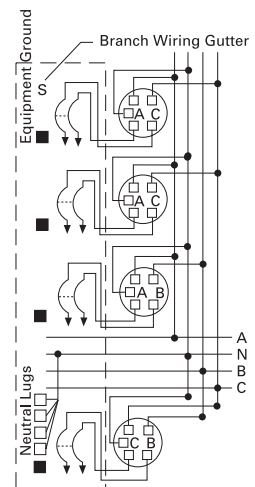
WML12225RJ



WML22AB225RJ

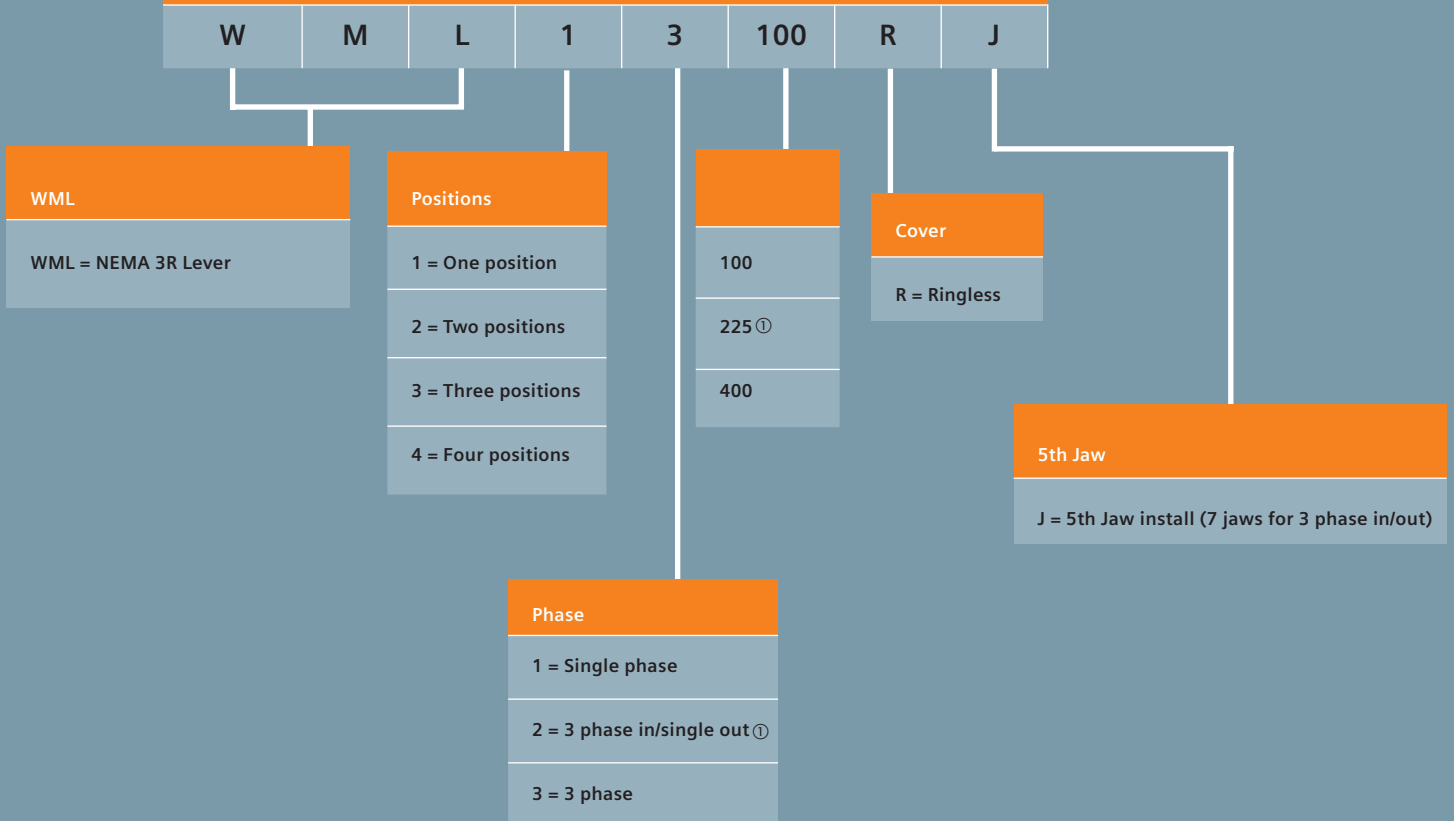


WML32225RJ



WML42CA225RJ

Catalog Number Logic Example



① 2 position and 4 position 225A stacks have AB, BC, or CA configurations