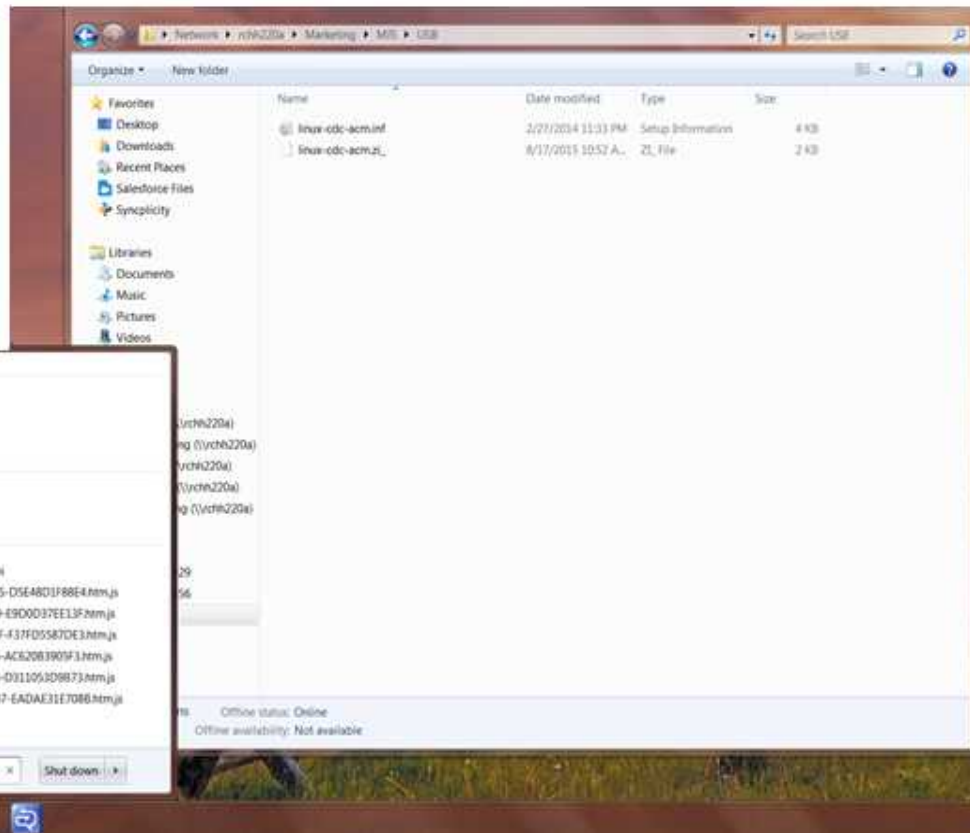


# MJ-5 Control panel driver installation

enabling the USB to PC interface

## MJ-5 Control panel driver installation



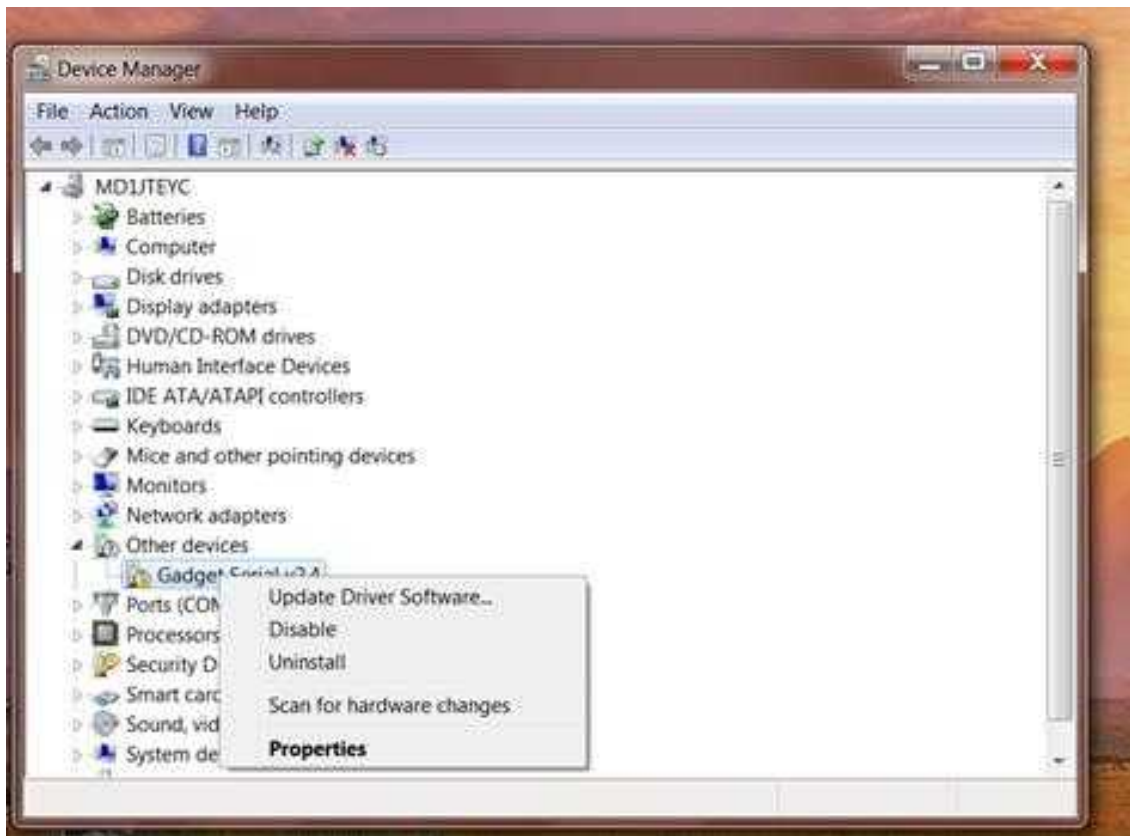
- Save the driver files in an easily found location (unzip if required).
- Connect the MJ-5 USB B Port in front to your PC. Windows may try to locate and install a driver automatically.
- Locate the Device Manager. This is most easily done by using the search bar in the start menu

## MJ-5 Control panel driver installation



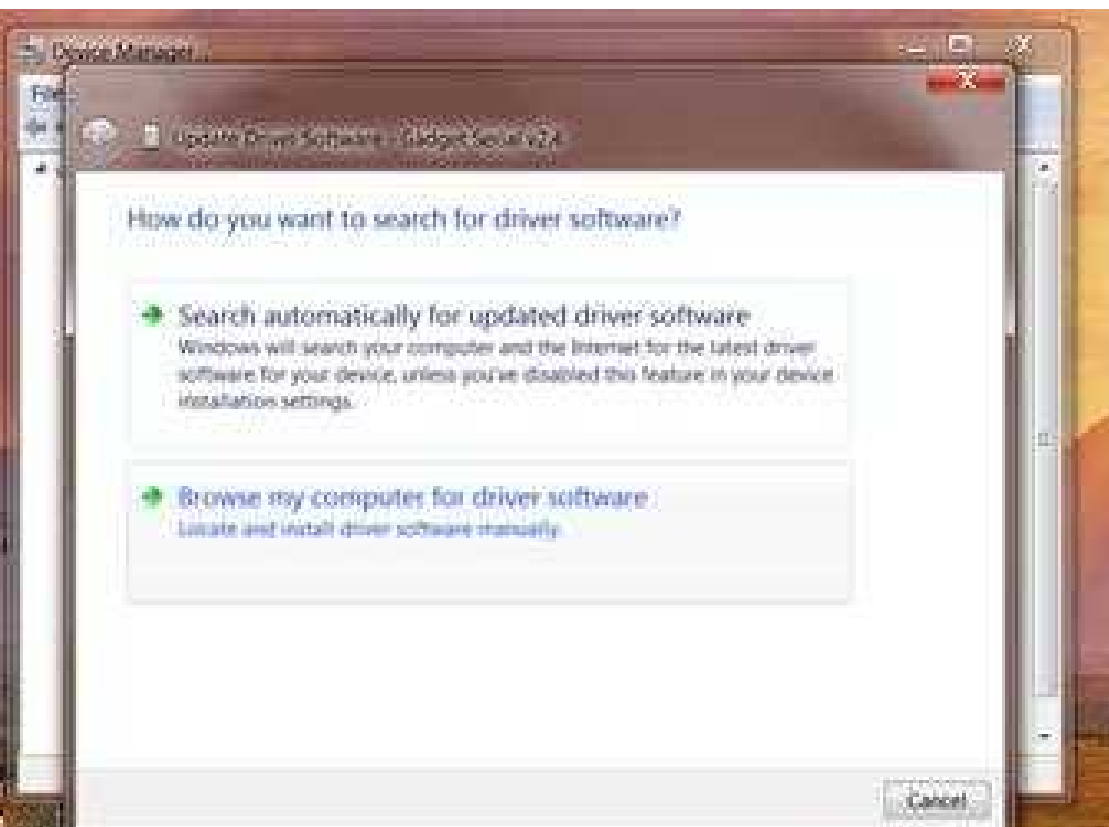
- Open the Device manager.
- Locate the “Other Devices” heading. Under this heading should be a device called Gadget Serial.
- If Gadget Serial is not displayed, try clicking the arrow beside “Other Devices”.
- Sometime it is not under other devices it gets is under Comm & LPT. It may show something other than Gadget Serial .
- If the device still doesn’t appear, then ensure the USB cable is connected at both ends.

## MJ-5 Control panel driver installation



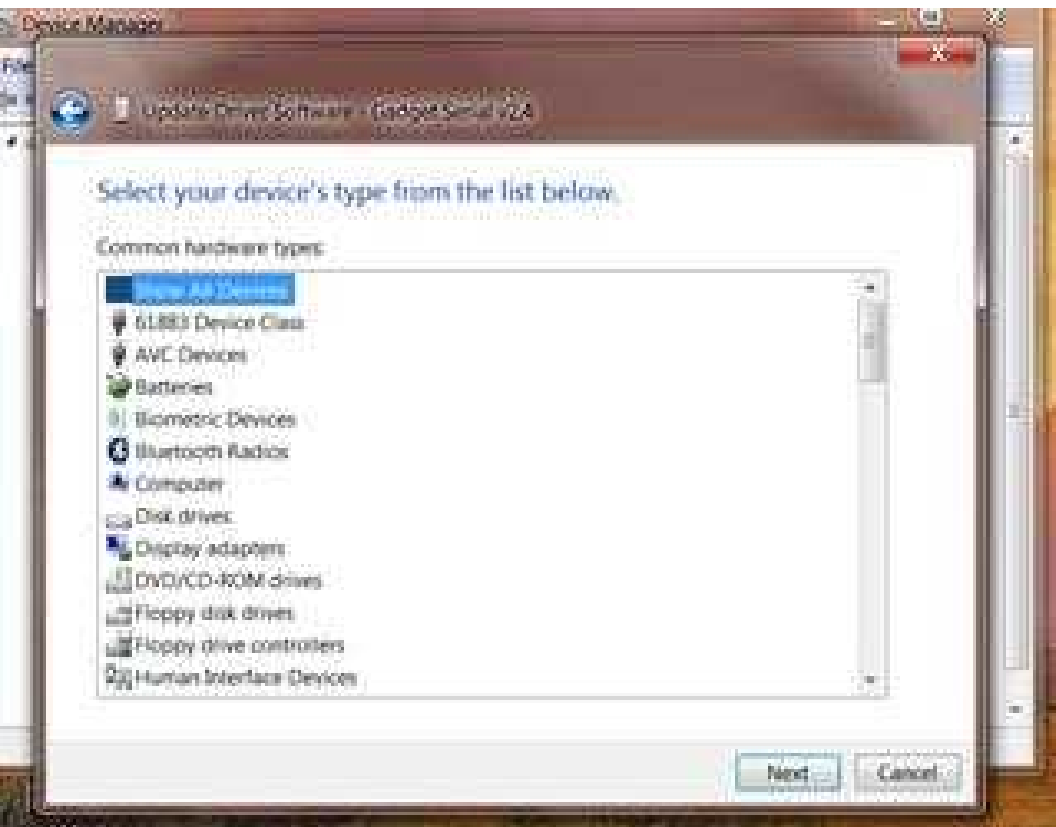
- Right Click Gadget Serial and select Update Driver Software.

## MJ-5 Control panel driver installation



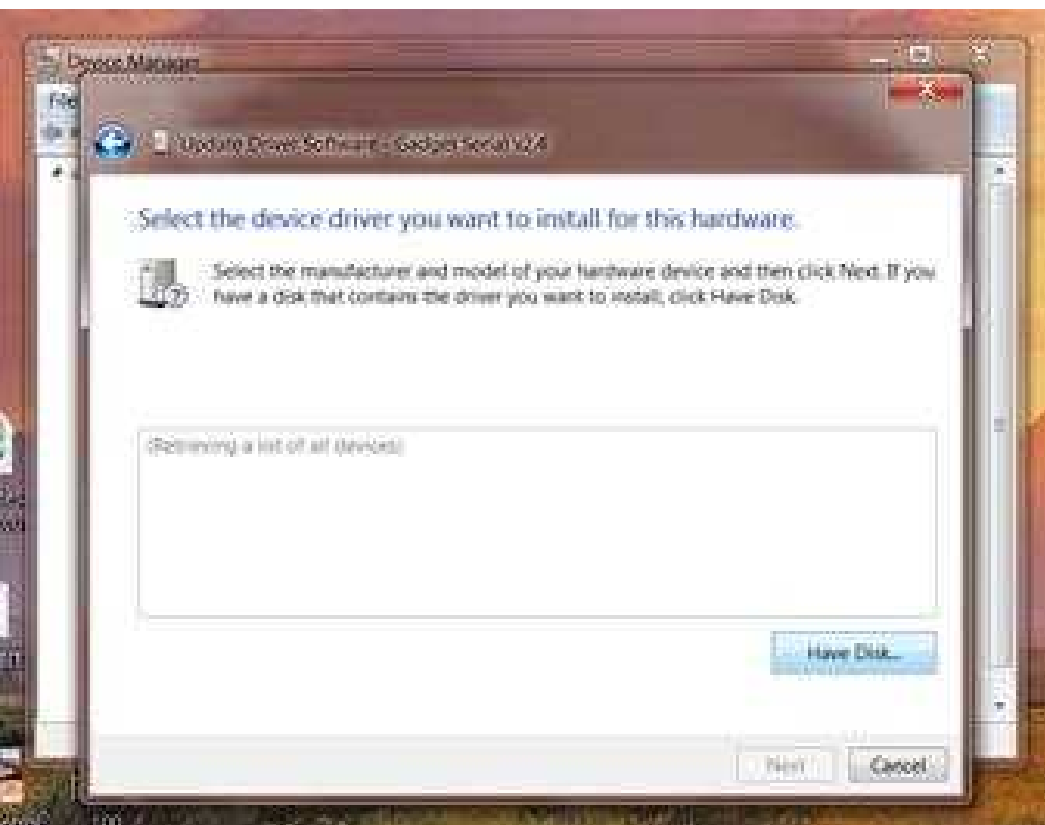
- Select “Browse my computer for driver software”

## MJ-5 Control panel driver installation



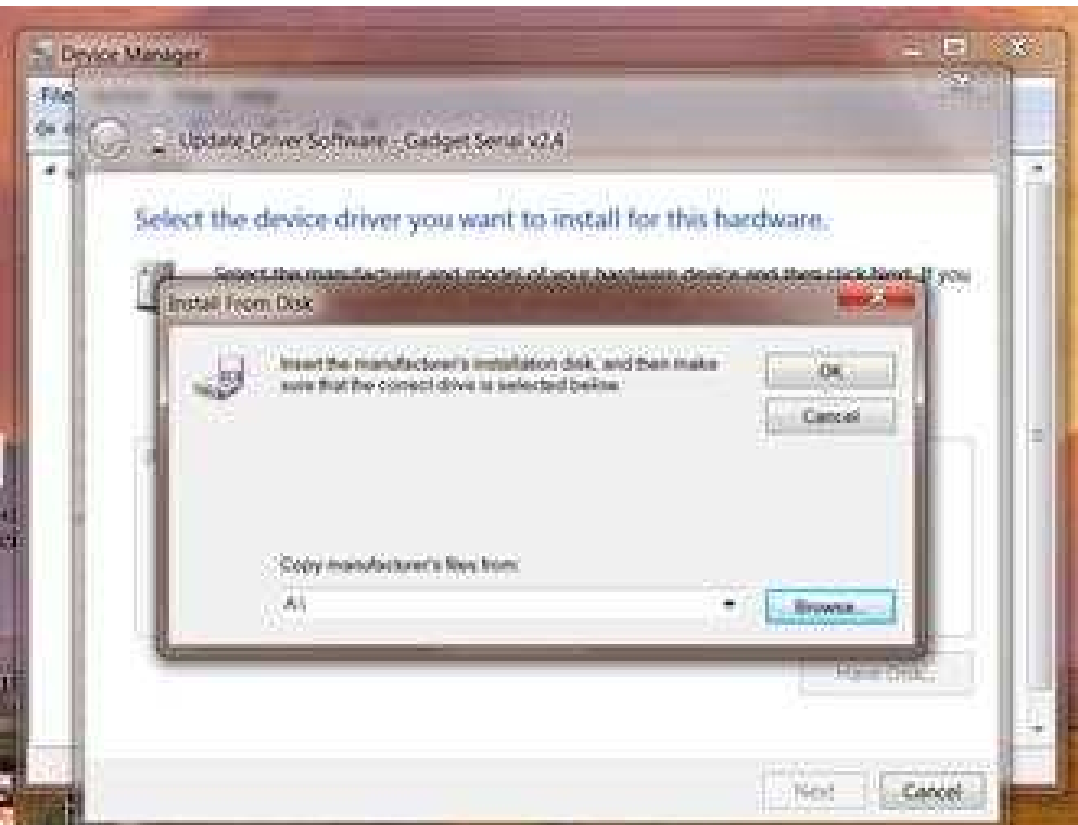
- Select Show all Devices
- Click the Next button

## MJ-5 Control panel driver installation



- At the next pop-up window, select “Have Disk.”

## MJ-5 Control panel driver installation



- Browse to the directory where the driver is saved.



## MJ-5 Control panel driver installation



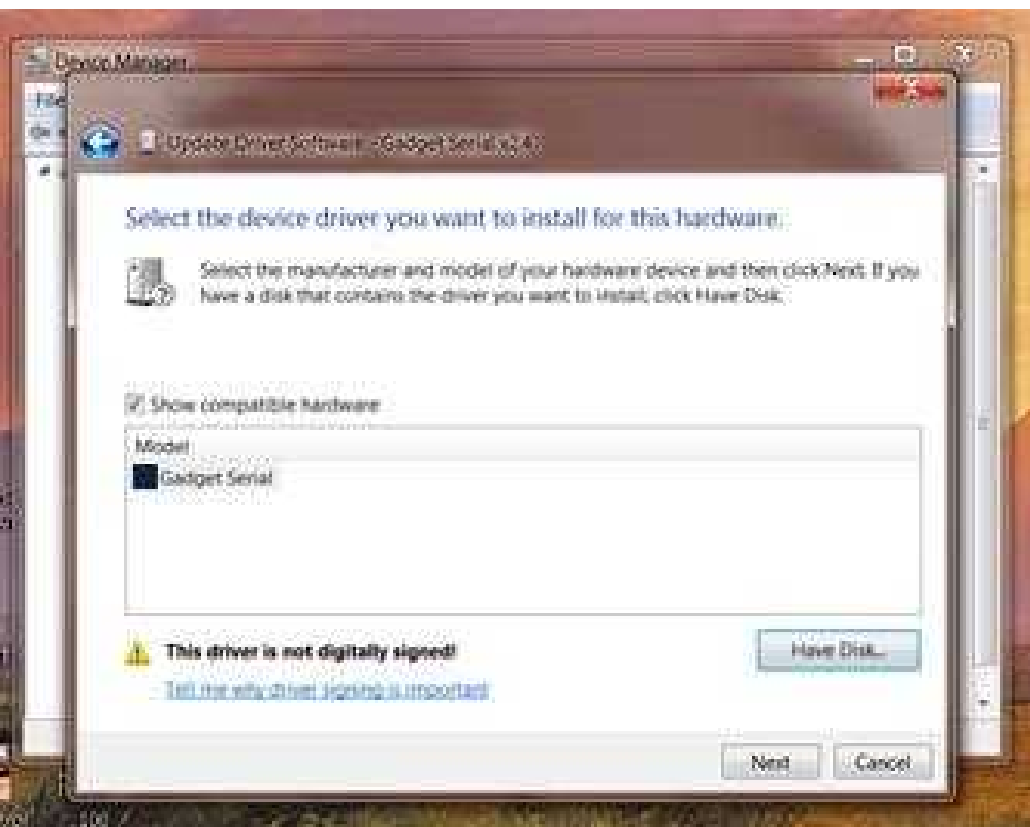
- Select the driver file and
- Click Open.

## MJ-5 Control panel driver installation



- Click OK.

## MJ-5 Control panel driver installation



- Click Next

## MJ-5 Control panel driver installation



- You may see an error screen. If your local procedures allow, click install the driver anyway.

## MJ-5 Control panel driver installation



- If successful, this window will appear.

## MJ-5 Control panel driver installation



- At this point, Gadget Serial should be connected to a certain COM port without errors. In this example, Gadget Serial is connected to COM 4, but it might be different based on the individual PC

# MJ-5 Control panel driver installation

## Contact page



**J. Wilson Trantum**  
Application Engineer  
Voltage Regulator Controls  
444 Highway 49 South  
Richland, MS 39218  
Phone: +1 601 278 1428  
E-mail:  
[john.trantum@siemens.com](mailto:john.trantum@siemens.com)

**Rakesh Kumar**  
Product / Controls Engineer  
Voltage Regulator Controls  
444 Highway 49 South  
Richland, MS 39218  
Phone: +6019329824  
E-mail:  
[kumar.rakesh@siemens.com](mailto:kumar.rakesh@siemens.com)

**siemens.com**