

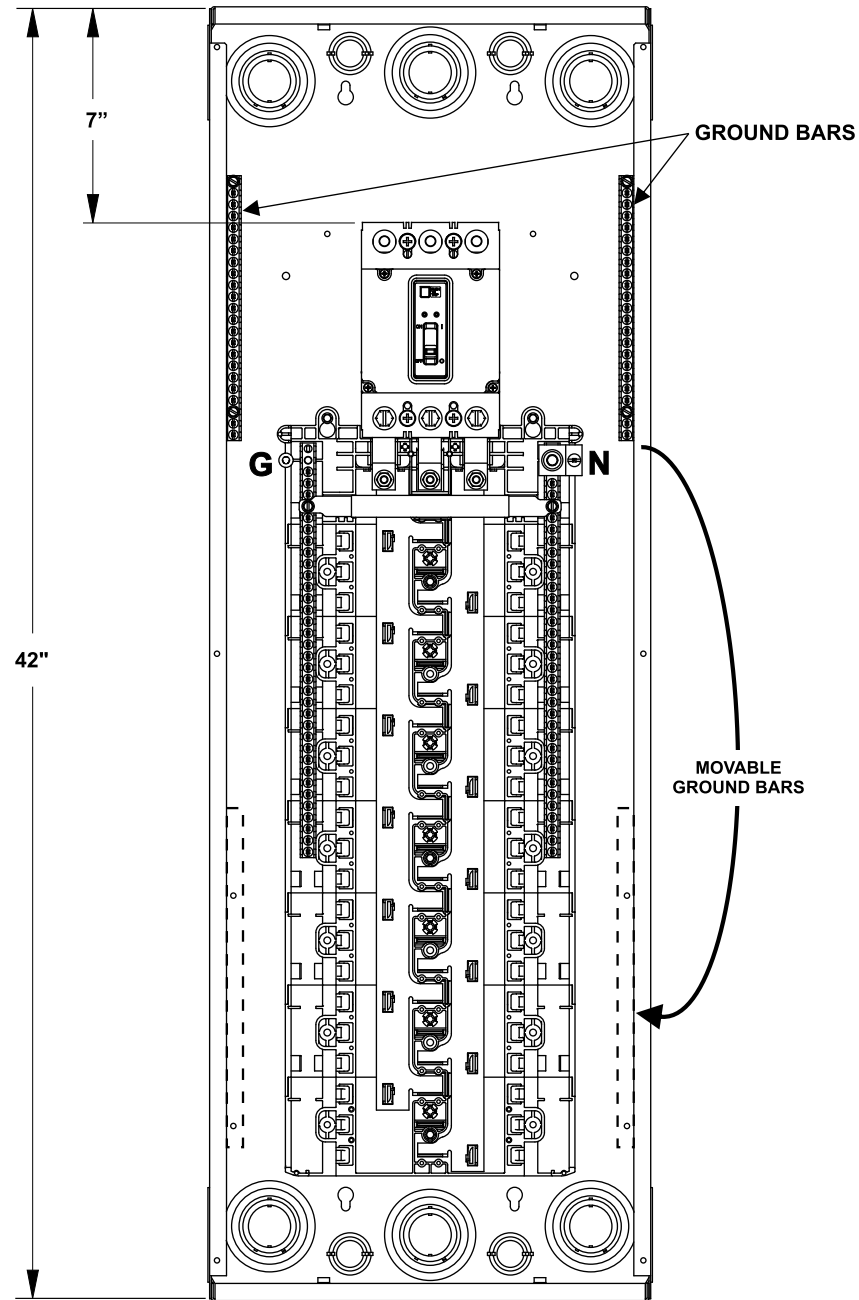
Catalog Numbers, Features and Ratings

- 3 PHASE, 3 OR 4 WIRE, 240V ~ MAX.
- CONVERTIBLE TO MAIN LUG
- INVERTIBLE
- TYPE 1 INDOOR ENCLOSURE
- ANSI 61 POWDER COATED

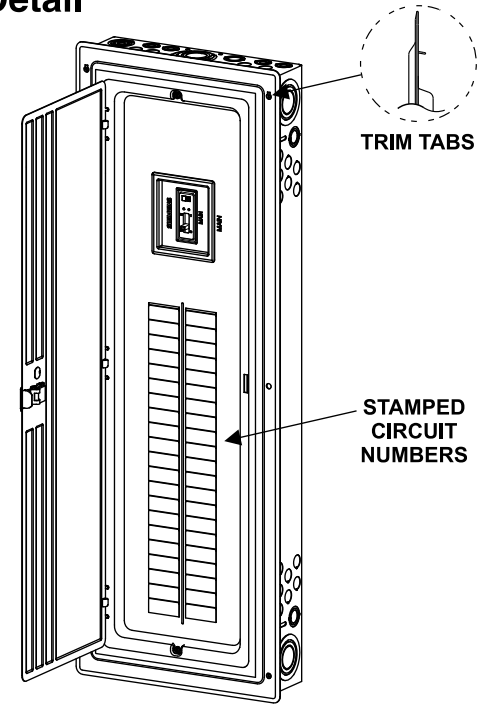


| Catalog Number | ENCLOSURE DIMS | | | Amps Max. | Max. AIC Rating | Number Spaces | Number Circuits | Bus Bar Material | Bus Bar Plating | Percent Neutrals | Trim Color |
|----------------|----------------|-------|------|-----------|-----------------|---------------|-----------------|------------------|-----------------|------------------|------------|
| | L | W | D | | | | | | | | |
| P4242B3150CU | 42.00 | 14.25 | 3.88 | 200 | 22k AIC | 42 | 42 | Copper | Tin Plated | 150% | Gray |

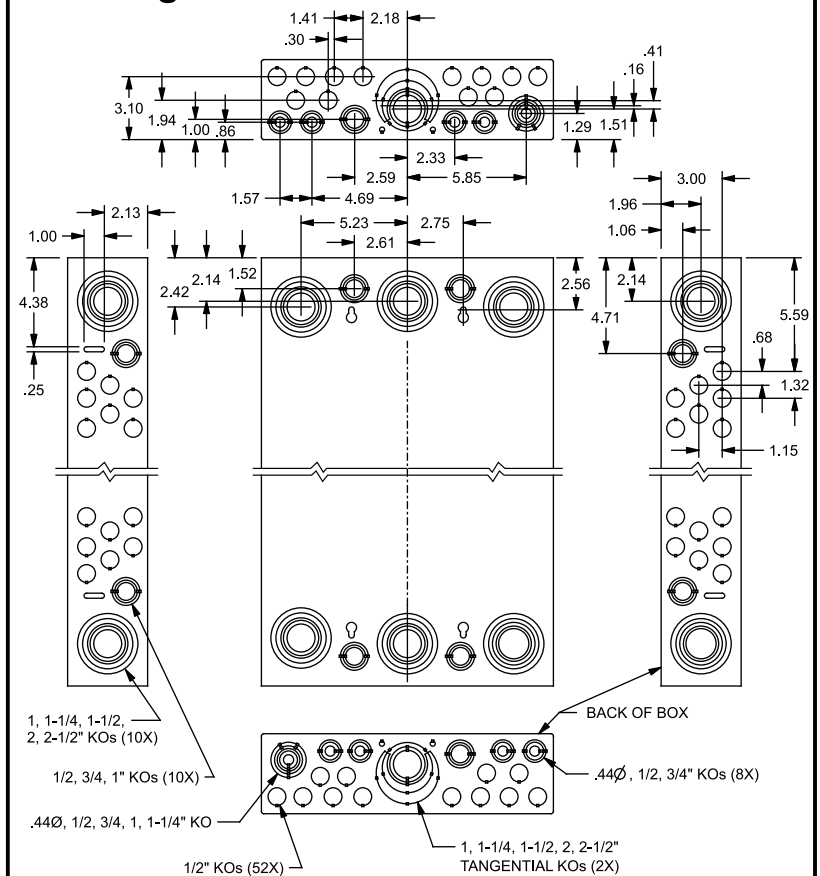
Shown With Trim/Door Removed



Trim/Door Detail



KO Diagram



TERMINAL WIRE SIZES AND TORQUES

USE COPPER OR ALUMINUM 60°/75°C WIRE
SEE BREAKER MARKINGS FOR WIRE SIZE AND TORQUE REQUIREMENTS.
SERVICE CONDUCTORS FED THROUGH OPPOSITE ENDWALL
OF MAIN TERMINALS ARE RESTRICTED TO 4/0 AWG MAX.

| TERMINALS | WIRE | TORQUE |
|---|---------------------------------------|-------------------------------------|
| N | 300 kcmil - 4 AWG | 275 LB-INS |
| MAIN BREAKER | 4/0 AWG CU 300 kcmil AL Max. | See Breaker |
| G | 2/0-6 AWG | 110 LB-INS |
| NEUTRAL/GROUND BARS (USE TYPE EC3GB GROUND BAR KIT ACCESSORY) | 10-14 CU/10-12 AL 8 AWG 6-4 AWG | 20 LB-INS 25 LB-INS 35 LB-INS |
| GROUND CONDUCTORS ONLY | (2) or (3) 14 AWG (2) 12-10 AWG | 20 LB-INS 20 LB-INS |
| ECLK1-2 NEUTRAL LUG KIT | 2/0-4 AWG | 45 LB-INS |
| ECLK2 NEUTRAL LUG KIT | 2/0-4 AWG | 135 LB-INS |
| ECLK3 NEUTRAL LUG KIT | 300 kcmil - 1 AWG | 340 LB-INS |
| MAIN LUG/MAIN BRKR TO BUS CONNECTION (1/4-20 NUT) | | 45 LB-INS |
| BONDING SCREW | | 45 LB-INS |

ACCESSORIES

REFER TO WIRING DIAGRAM FOR
CORRECT ACCESSORY USAGE

| DESCRIPTION | CAT. NO. |
|-------------------------------|----------------------------------|
| DOOR LOCK | ECQFL2 |
| FILLER PLATE, 1" | ECQF3 |
| MAIN BRKR FILLER PLATE | EC3PMFPR |
| BREAKER HOLD-DOWN | ECMBR2 |
| BONDABLE GROUND LUG | ECLKB1 |
| SUBFEED LUG KIT | ECLK2125 ECLK2225 ECLK3225 |
| 150-225A MAIN LUG KIT | ECMLK3225 |
| SURF. MOUNT SPACER KIT | ECSMK1 |
| ARC FLASH LABEL | EC AFL |
| 100A MAIN BRKR KIT (BACK-FED) | MBK3100 |

| MAIN BREAKER KITS | | |
|-------------------|-------------|------------|
| DESCRIPTION | CATALOG NO. | |
| 10K AIC | MBK3125R | MBK3150R |
| 22K AIC | MBK3125HR | MBK3150HR |
| 65K AIC | MBK3125HHR | MBK3150HHR |
| 100K AIC | HMBK3125HR | HMBK3150HR |

| GROUND BAR KITS | | |
|------------------------------------|----------|--|
| DESCRIPTION | CAT. NO. | |
| TYPE EC3GB KIT, 21 SCREWS | EC3GB21 | |
| TYPE EC3GB KIT, 21 SCREWS, 2/0 LUG | EC3GB212 | |
| TYPE EC3GB KIT, 27 SCREWS | EC3GB27 | |
| TYPE EC3GB KIT, 27 SCREWS, 2/0 LUG | EC3GB272 | |
| TYPE EC3GB KIT, 30 SCREWS | EC3GB30 | |
| TYPE EC3GB KIT, 30 SCREWS, 2/0 LUG | EC3GB302 | |
| TYPE EC3GB KIT, 35 SCREWS, 2/0 LUG | EC3GB352 | |

© 2016 Copyright Siemens Industry, Inc.

SIEMENS
Siemens Industry, Inc.

PL Series Load Centers™

Description: **3 Phase, Indoor, 42 Position,
42 Circuits Max, 150A Main Breaker**

KAM 9/8/16 DO NOT SCALE DRAWING Dwg No: **P4242B3150CU**