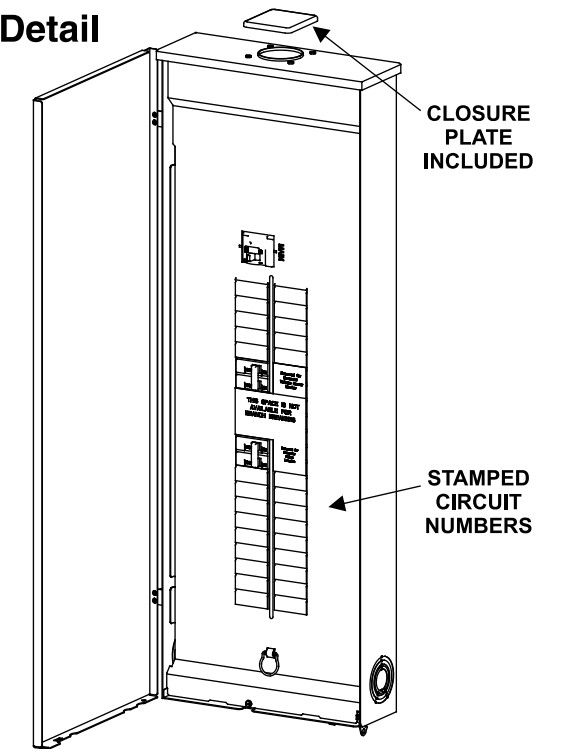


Catalog Numbers, Features and Ratings

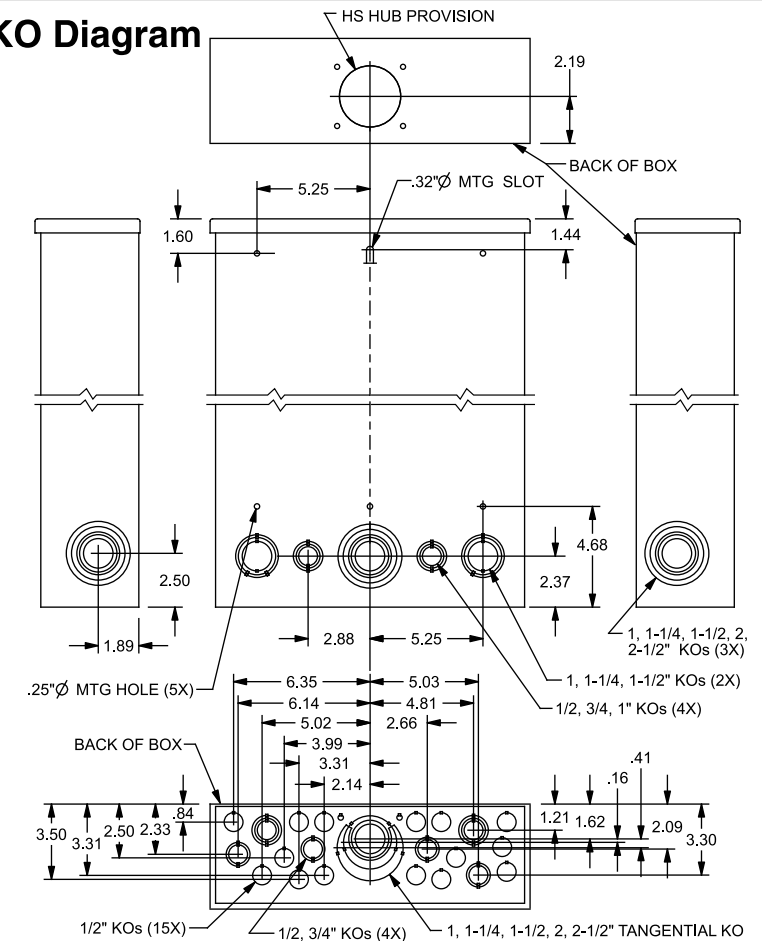
- 1 PHASE, 3 WIRE, 120/240V ~
- W3042B1200GEN: 22K AIC MAIN BREAKER FACTORY INSTALLED (SEE WIRING DIAGRAM FOR DETAILS)
- W3042L1225GEN: 100K AIC MAX. RATED (SEE WIRING DIAGRAM FOR DETAILS)
- CONVERTIBLE TO MAIN LUG/ MAIN BREAKER
- TYPE N3R OUTDOOR ENCLOSURE
- ANSI 61 GRAY POWDER COATED

| Catalog Number | ENCLOSURE DIMS | | | Amps Max | Number Spaces | Number Circuits | Bus Bar Material | Bus Bar Plating | Percent Neutrals |
|----------------|----------------|-------|------|----------|---------------|-----------------|------------------|-----------------|------------------|
| | L | W | D | | | | | | |
| W3042B1200GEN | 42.00 | 14.25 | 3.88 | 200 | 30 | 42 | Copper | Tin Plated | 100% |
| W3042L1225GEN | 42.00 | 14.25 | 3.88 | 225 | 30 | 42 | Copper | Tin Plated | 100% |

Trim/Door Detail



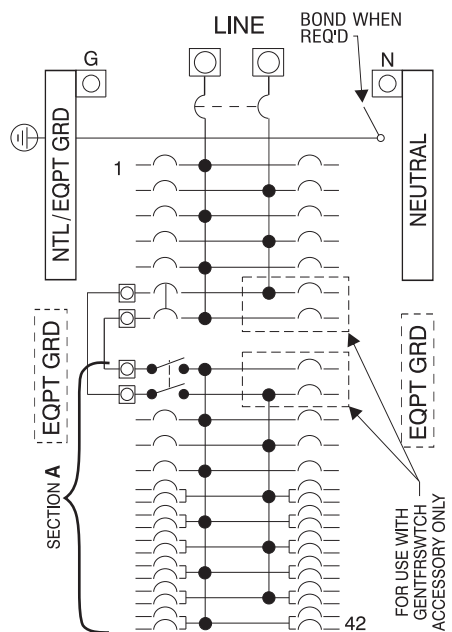
KO Diagram



SCHEMATICS

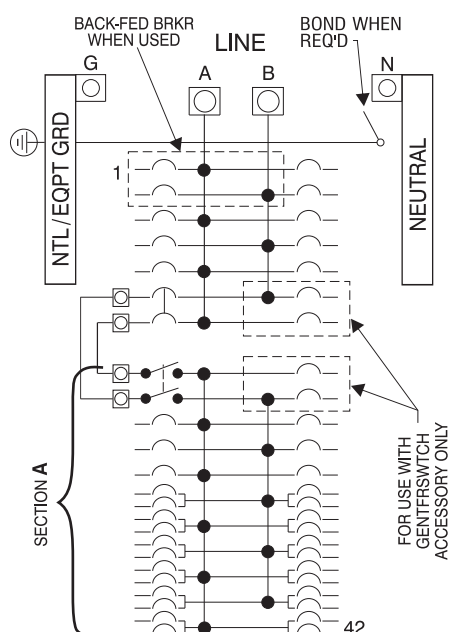
W3042B1200GEN

"SECTION A" IS RATED 125A MAX.

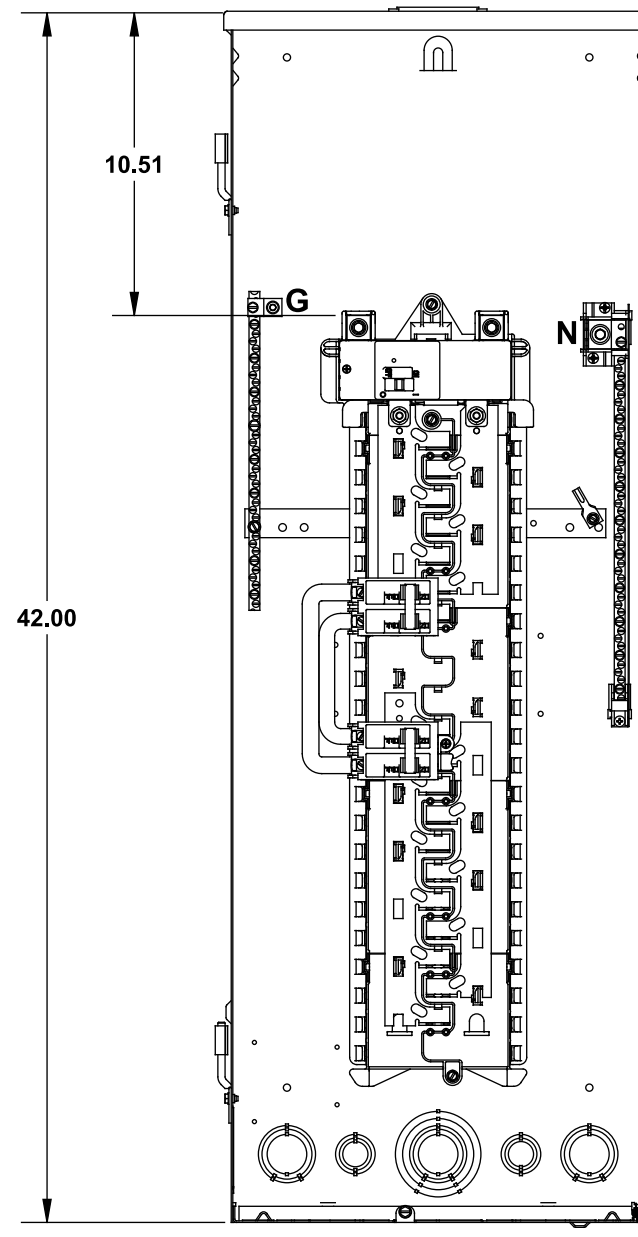


W3042L1225GEN

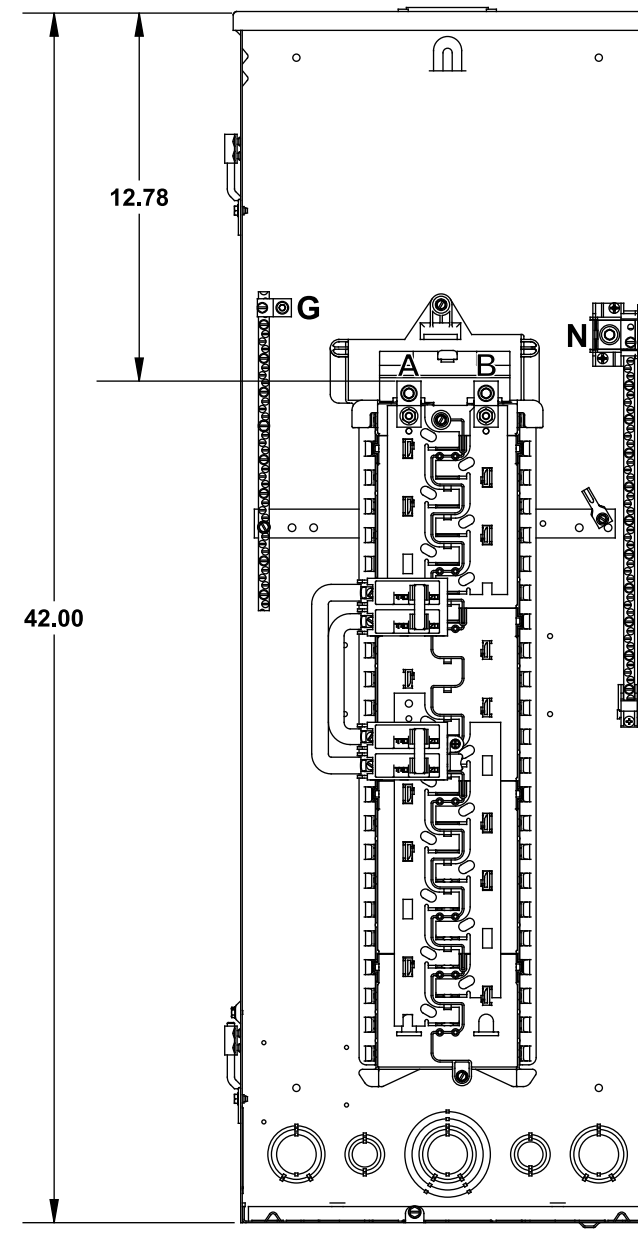
"SECTION A" IS RATED 125A MAX.



W3042B1200GEN



W3042L1225GEN



TERMINAL WIRE SIZES AND TORQUES

USE COPPER OR ALUMINUM 60°/75°C WIRE
SEE BREAKER MARKINGS FOR WIRE SIZE AND TORQUE REQUIREMENTS.

EQUIPMENT GROUND BAR
TERMINALS ARE SUITABLE FOR THE FOLLOWING WIRE COMBINATIONS:
SMALL TERMINALS: ONE 14 TO 6 AWG CU; ONE 12 TO 6 AWG AL; TWO 14 AWG CU; TWO 12 AWG CU; TWO 12 AWG AL SOLID WIRES.
LARGE TERMINALS: ONE 14 TO 2 AWG CU; ONE 12 TO 2 AWG AL; TWO OR THREE 14 AWG CU; TWO OR THREE 12 AWG CU OR AL; TWO 10 AWG CU; TWO OR THREE 10 AWG AL; THREE 10 AWG CU SOLID WHEN TORQUED TO 50 LB-IN; THREE 10 AWG CU STRANDED.

| TERMINALS | WIRE | TORQUE |
|---|-----------------|-----------|
| A, B | 300 kcmil-4 AWG | 275 LB-IN |
| N | 300 kcmil-4 AWG | 250 LB-IN |
| G | 20 - 6 AWG | 90 LB-IN |
| NEUTRAL AND EQPT GROUND BAR | | |
| SMALL TERMINALS | 10 - 14 AWG | 20 LB-IN |
| | 8 AWG | 25 LB-IN |
| | 6 AWG | 35 LB-IN |
| LARGE TERMINALS | 10 - 14 AWG | 35 LB-IN |
| | 8 AWG | 40 LB-IN |
| | 1/0 - 6 AWG | 45 LB-IN |
| ECLK2SC NEUTRAL LUG KIT | 20 - 6 AWG | 50 LB-IN |
| MAIN LUG/MAIN BRKR TO BUS CONNECTION (1/4-20 NUT) | | 45 LB-IN |

| CONDUIT HUBS | |
|--------------|----------|
| TRADE SIZE | CAT. NO. |
| 1 INCH | ECHS100 |
| 1-1/4 INCH | ECHS125 |
| 1-1/2 INCH | ECHS150 |
| 2 INCH | ECHS200 |
| 2-1/2 INCH | ECHS250 |

ACCESSORIES

REFER TO WIRING DIAGRAM FOR CORRECT ACCESSORY USAGE

| ACCESSORIES | |
|---------------------------|-------------------|
| DESCRIPTION | CATALOG NO. |
| FILLER PLATE, 1" | QF3 |
| BREAKER HOLD-DOWN | ECMBR2 |
| GROUND BAR KITS | USE "ECLX" SERIES |
| GENERATOR TRANSFER SWITCH | GENTFRSWTCH |

| MAIN LUG / MAIN BREAKER KITS | |
|------------------------------|----------|
| DESCRIPTION | CAT. NO. |
| 150 AMP MAIN BREAKER | MBK150A |
| 200 AMP MAIN BREAKER | MBK200A |
| 225 AMP MAIN BREAKER | MBK225A |
| 150-225 AMP MAIN LUG | ECMLK225 |

USE APPROPRIATE KIT FROM CHART BELOW TO CONVERT PANEL.

© 2011 Copyright Siemens Industry, Inc.

SIEMENS
Siemens Industry, Inc.

Generator Ready Load Centers

Description: **1 Phase, Outdoor, 30 Position, 42 Circuit Cut Sheet**

KAM 6/20/11 DO NOT SCALE DRAWING Dwg No: 10D 30 GEN