

# SIEMENS

Max - Flex™ Operators  
Operadores Max-Flex™  
Opérateurs Max-Flex™

U.S. Cat. No.	Euro Order No.	U.S. Cat. No.	Euro Order No.	U.S. Cat. No.	Euro Order No.
Item: MFMF	3VL9300-3JN01	MFCF060	3VL9300-3JQ61	MFHM3R	3VL9600-3JP01
MFKF3R	3VL9300-3JM01	MFCF072	3VL9300-3JQ71	MFHM3RB	3VL9600-3JP11
MFKF43R	3VL9300-3JM41	MFCF084	3VL9300-3JQ81	MFHM3RSB	3VL9600-3JP61
MFCF036	3VL9300-3JQ31	MFCF096	3VL9300-3JQ21	MFHM3RS	3VL9600-3JP21
MFCF048	3VL9300-3JQ41	MFCF120	3VL9300-3JQ01	MFHM4X	3VL9600-3JP41
		MFCF144	3VL9300-3JQ11		

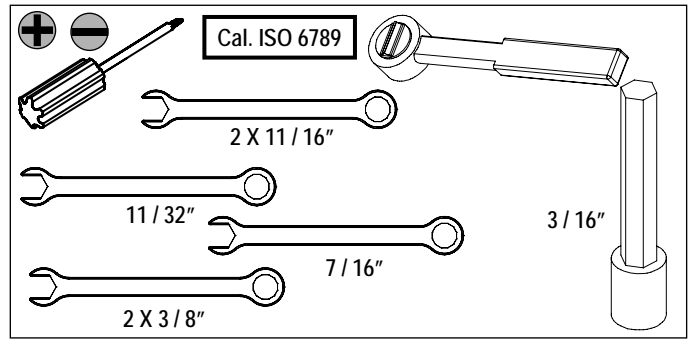
For Use With Frame CG, DG, FG  
Para Usar Con Caja Base CG, DG, FG

Installation Instructions / Instructivo de Instalación

 <b>Danger</b>	 <b>Peligro</b>	 <b>Danger</b>
<p><b>Hazardous Voltage.</b> <b>Will cause death or serious injury.</b></p> <p>Turn off and lock out all power supplying this device before working on this device. Replace all covers before power supplying this device is turned on.</p>	<p><b>Tensión peligrosa.</b> <b>Puede causar la muerte o lesiones graves.</b></p> <p>Desenergice totalmente antes de instalar o darle servicio. Reemplace todas las barreras y cubiertas antes de energizar el interruptor.</p>	<p><b>Tension dangereuse.</b> <b>Danger de mort ou risque de blessures graves.</b></p> <p>Couper l'alimentation de l'appareil et barrer avant de travailler. Remplacez tous les couverts avant que l'alimentation de pouvoir soit alimenté.</p>

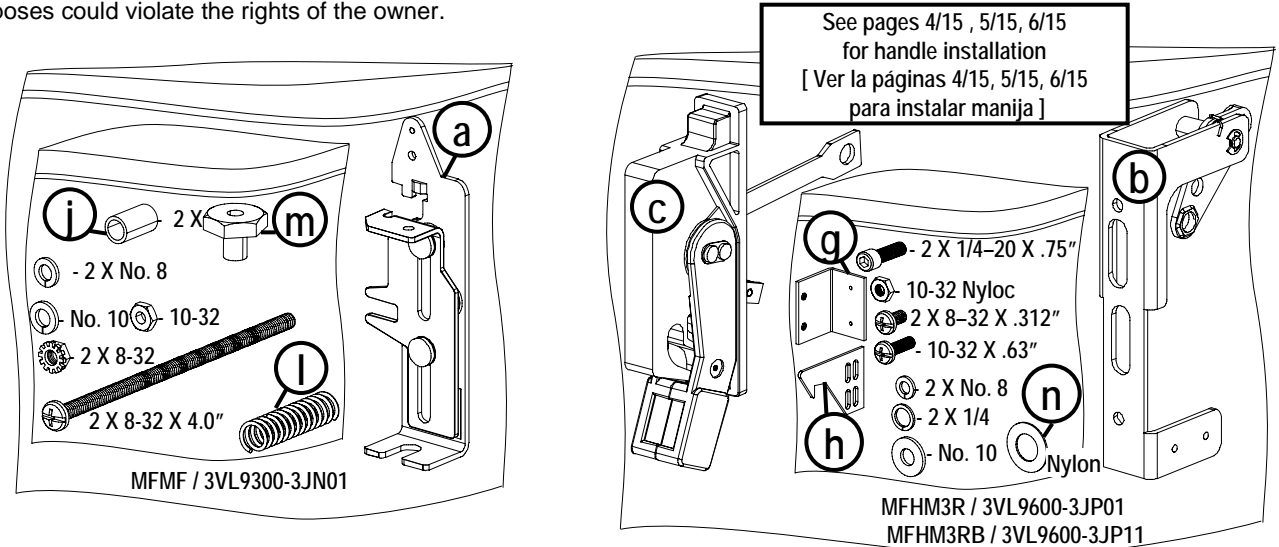
Use only with Siemens certified Components.  
Utilizar únicamente con componentes certificados de Siemens.  
A utiliser uniquement avec les composants certifiés Siemens.

MFHM3R	Suitable For Type 1,3,3R,4,12,12K enclosures [ Apto par tipo 1,3,3R,4,12,12K caja ]
MFHM3RB	Suitable For Type 1,3,3R,4,12,12K enclosures [ Apto par tipo 1,3,3R,4,12,12K caja ]
MFHM3RS	Suitable For Type 1,2,3,3R,12,12K,13 enclosures [ Apto par tipo 1,2,3,3R,12,12K,13 caja ]
MFHM3RSB	Suitable For Type 1,2,3,3R,12,12K,13 enclosures [ Apto par tipo 1,2,3,3R,12,12K,13 caja ]
MFHM4X	Suitable For Type 1,2,3,3R,4,4X,12,12K,13 enclosures [ Apto par tipo 1,2,3,3R,4,4X,12,12K,13 caja ]



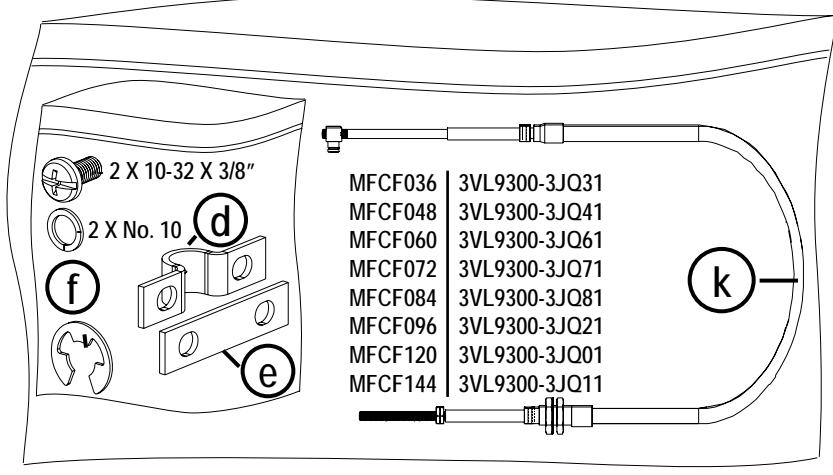
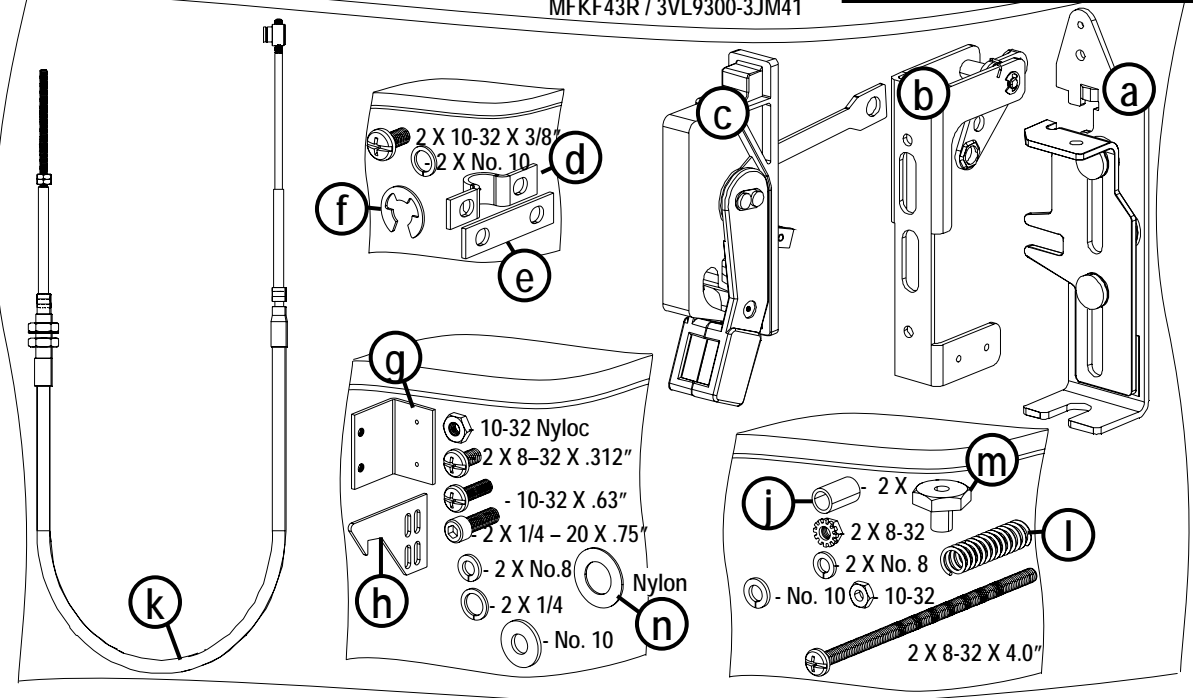
NOTE - These instructions do not purport to cover all details or variations in equipment, or to provide for every possible contingency to be met in connection with installation, operation or maintenance. Should further information be desired or should particular problems arise, which are not covered sufficiently for the purchaser's purposes, the matter should be referred to the local Siemens sales office. The contents of this instruction manual shall not become part of or modify any prior or existing agreement, commitment or relationship. The sales contract contains the entire obligation of Siemens. The warranty contained in the contract between the parties is the sole warranty of Siemens. Any statements contained herein do not create new warranties or modify the existing warranty.

Trademarks - Unless otherwise noted, all names identified by ® are registered trademarks of Siemens AG or Siemens Industry, Inc. The remaining trademarks in this publication may be trademarks whose use by third parties for their own purposes could violate the rights of the owner.

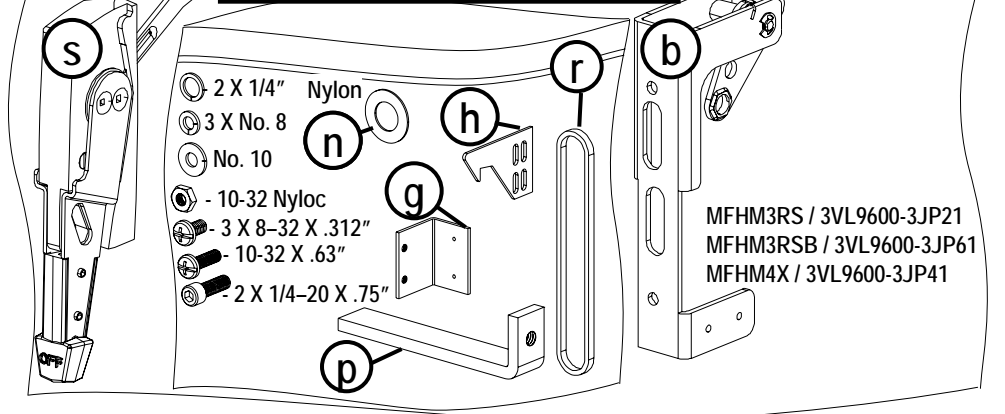


See pages 4/15 , 5/15, 6/15  
for handle installation  
[ Ver la páginas 4/15, 5/15, 6/15  
para instalar manija ]

MFKF3R / 3VL9300-3JM01  
MFKF43R / 3VL9300-3JM41



See pages 4/15 step 4, 5/15 step 5, 7/15  
for handle installation  
[ Ver la páginas 4/15 paso 4, 5/15 paso 5, 7/15  
para instalar manija ]





### **⚠ Danger**

**Hazardous Voltage.**  
Will cause death or serious injury.

Turn off and lock out all power supplying this device before working on this device.  
Replace all covers before power supplying this device is turned on.



### **⚠ Peligro**

**Tensión peligrosa.**  
Puede causar la muerte o lesiones graves.

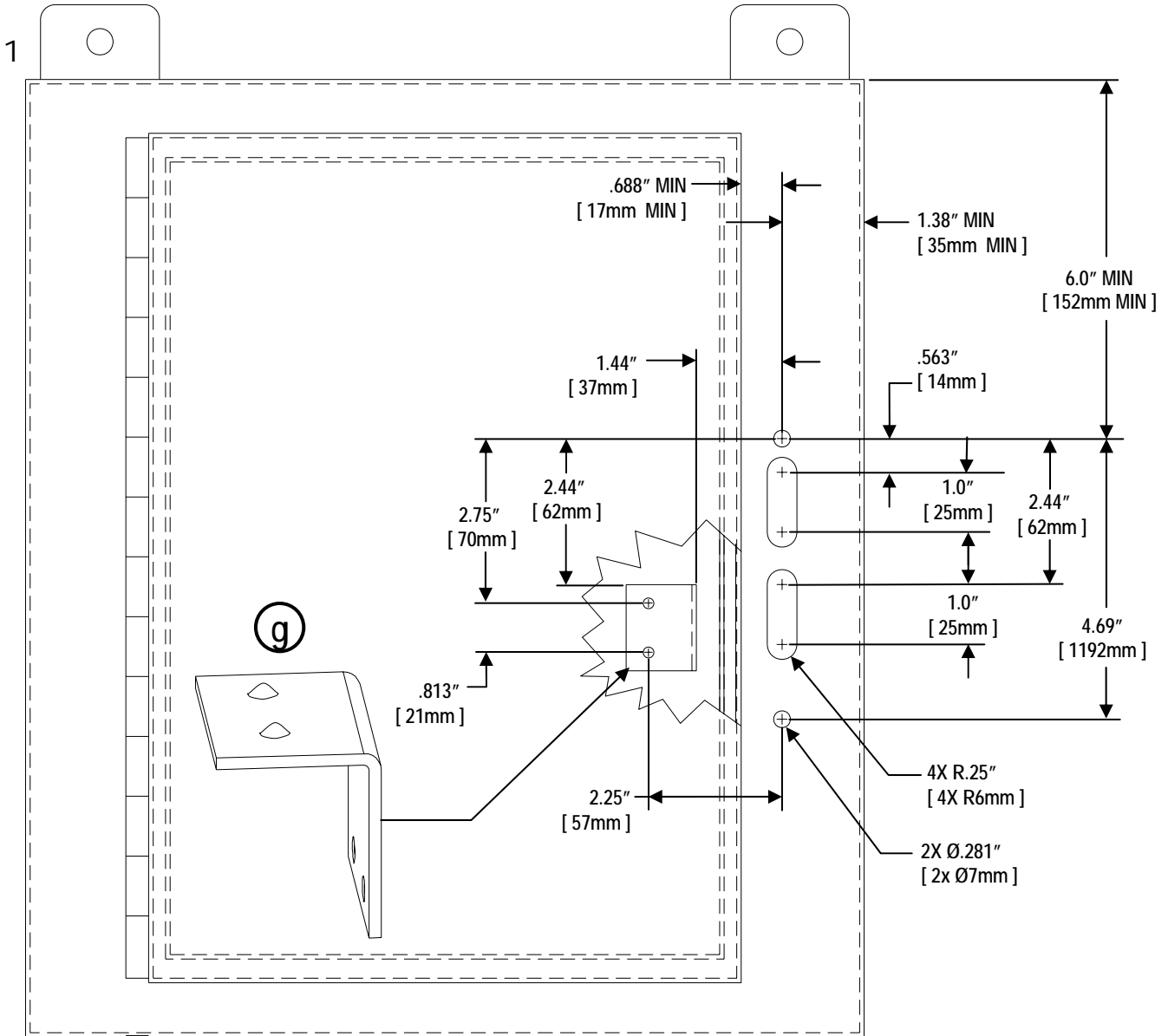
Desenergice totalmente antes de instalar o darle servicio.  
Reemplace todas las barreras y cubiertas antes de energizar el interruptor.

### **⚠ Danger**

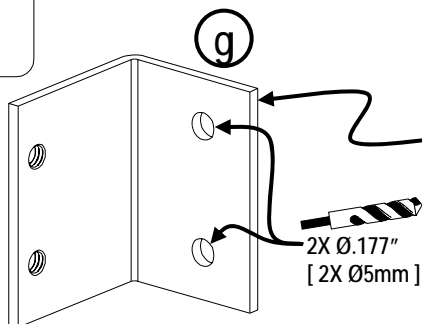
**Tension dangereuse.**  
Danger de mort ou risque de blessures graves.

Couper l'alimentation de l'appareil et barrer avant de travailler.  
Remplacez tous les couverts avant que l'alimentation de pouvoir soit alimenté.

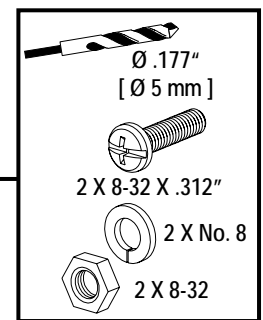
## **Dimensions for Welded or Screw mounting the cover catch.** **[ Dimensiones para soldar o atornillar el seguro de la puerta. ]**



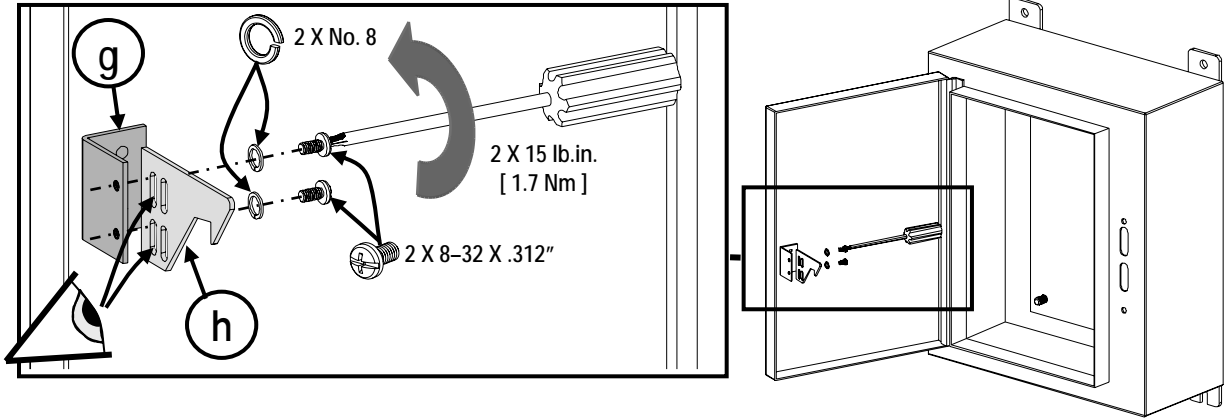
Option:  
[ Opción: ]



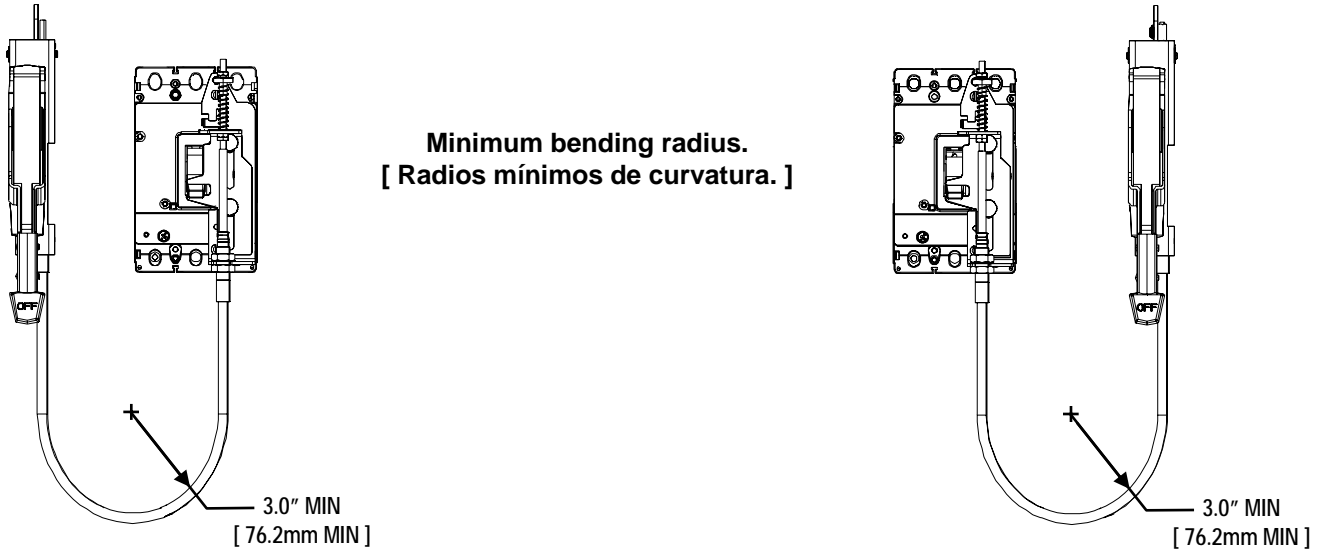
Customer supplied hardware for screw mounting option. Hardware must maintain environmental integrity ( NEMA rating ) of the enclosure.  
[ Material de montaje provisto por el cliente. Montaje por tornillo el material para montaje debe mantener la integridad ambiental ( la grado NEMA ) en la caja. ]



2



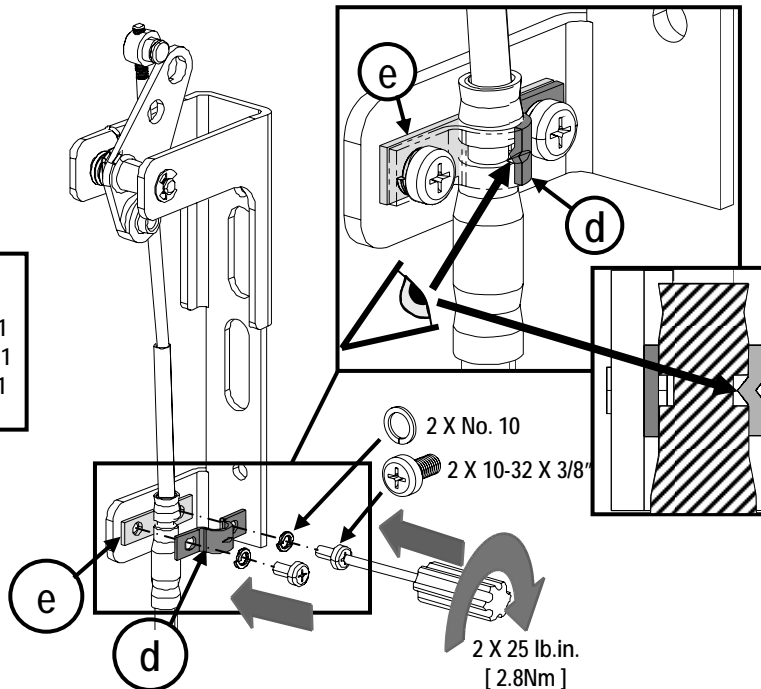
3



For left hand side mounting and right hand side mounting  
[ Para montaje de lado izquierdo y lado derecho ]

4

MFKM3R / 3VL9600-3JM01  
MFHM3R / 3VL9600-3JP01  
MFHM3RB / 3VL9600-3JP11  
MFHM3RSB / 3VL9600-3JP61  
MFHM3RS / 3VL9600-3JP21  
MFHM4X / 3VL9600-3JP41





### **⚠ Danger**

**Hazardous Voltage.**  
Will cause death or serious injury.



Turn off and lock out all power supplying this device before working on this device.  
Replace all covers before power supplying this device is turned on.

### **⚠ Peligro**

**Tensión peligrosa.**  
Puede causar la muerte o lesiones graves.

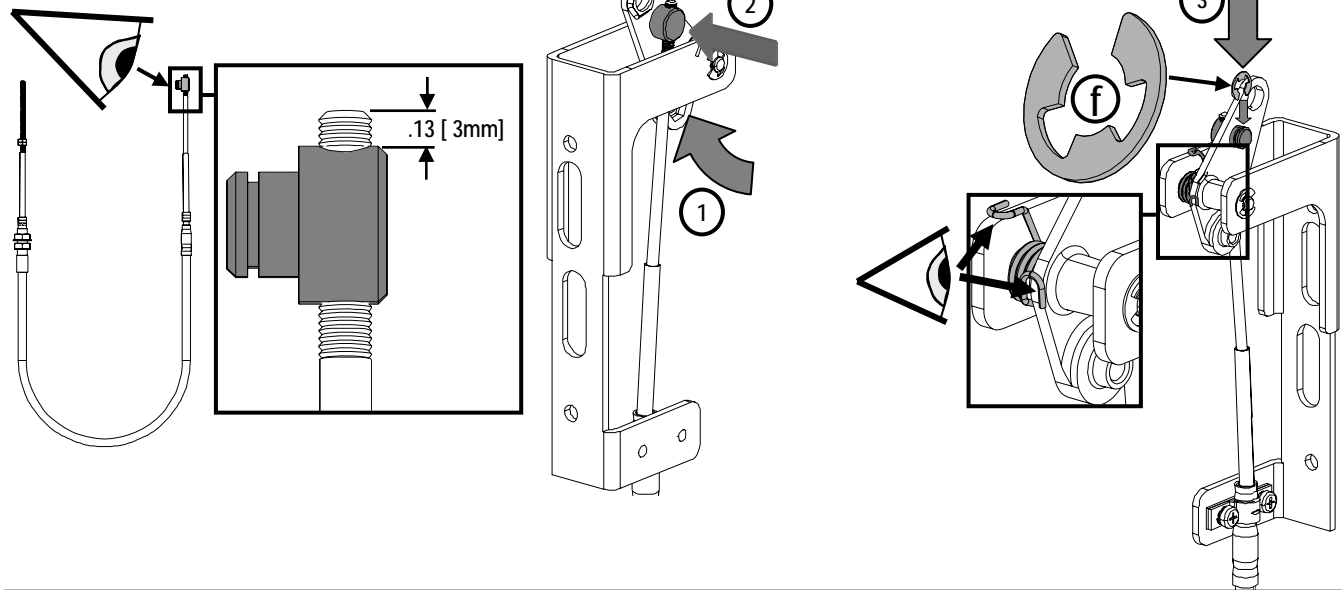
Desenergice totalmente antes de instalar o darle servicio.  
Reemplace todas las barreras y cubiertas antes de energizar el interruptor.

### **⚠ Danger**

**Tension dangereuse.**  
Danger de mort ou risque de blessures graves.

Couper l'alimentation de l'appareil et barrer avant de travailler.  
Remplacez tous les couverts avant que l'alimentation de pouvoir soit alimenté.

5



left hand side mounting  
[ Montaje de lado izquierdo ]

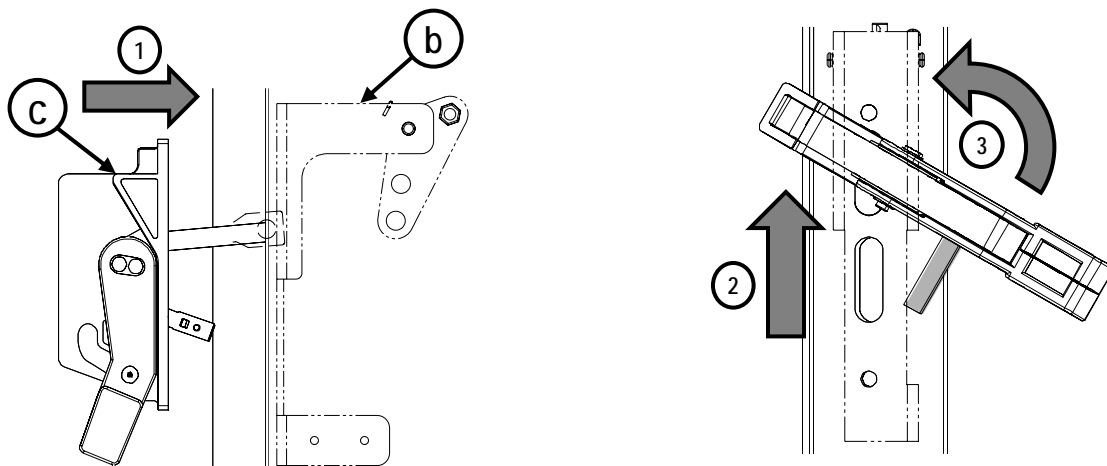
MFKM3R / 3VL9600-3JM01  
MFHM3R / 3VL9600-3JP01  
MFHM3RB / 3VL9600-3JP11

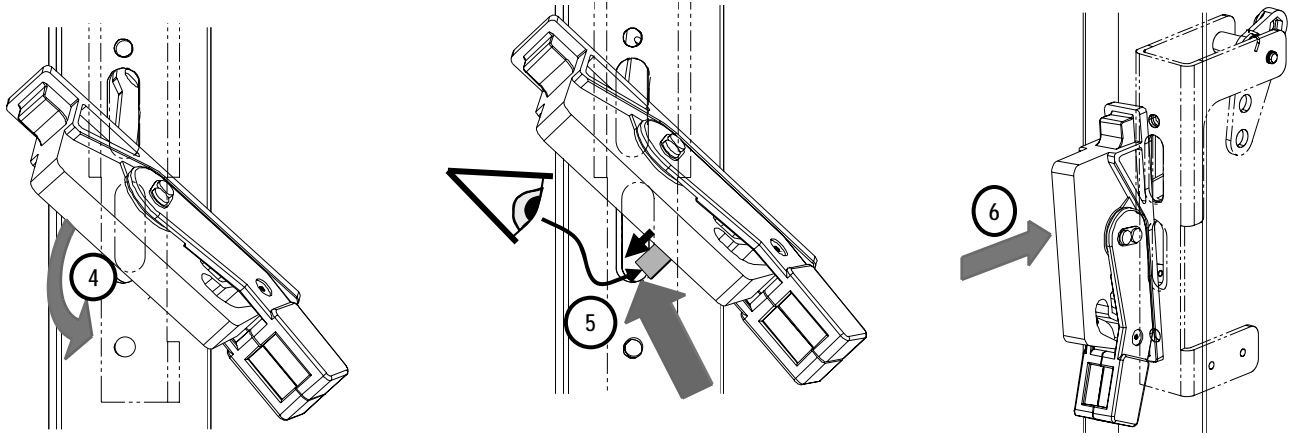
right hand side mounting  
[ Montaje de lado derecho ]

6



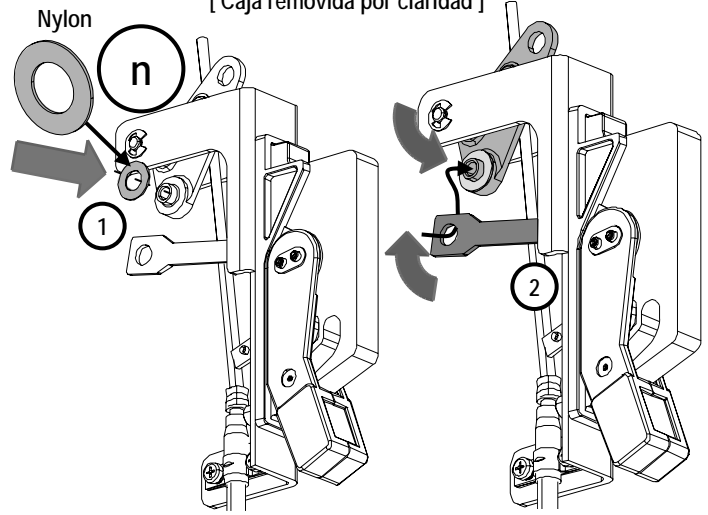
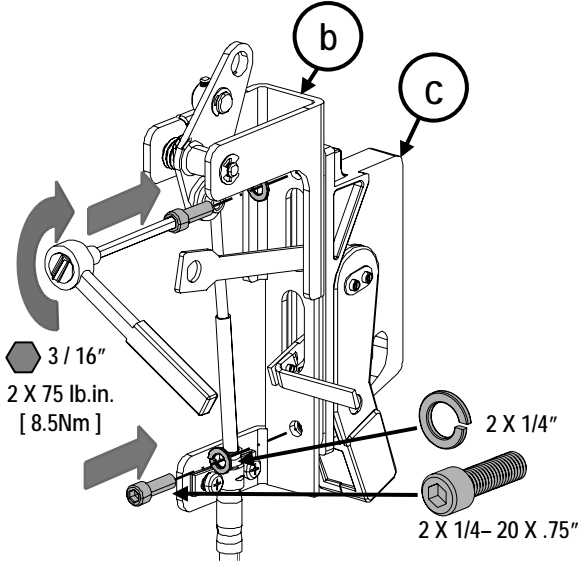
7





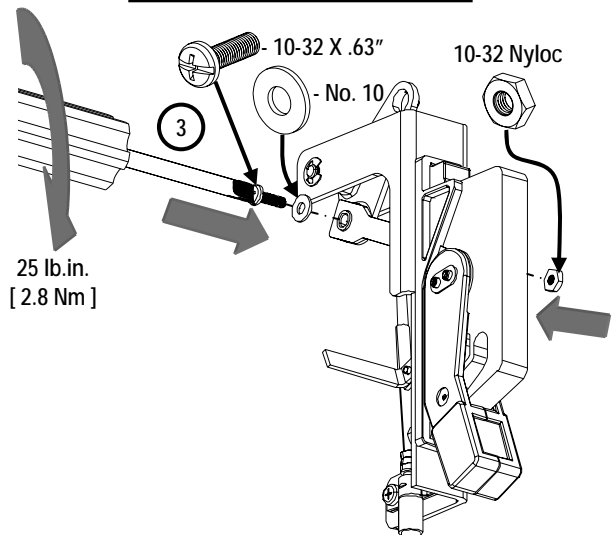
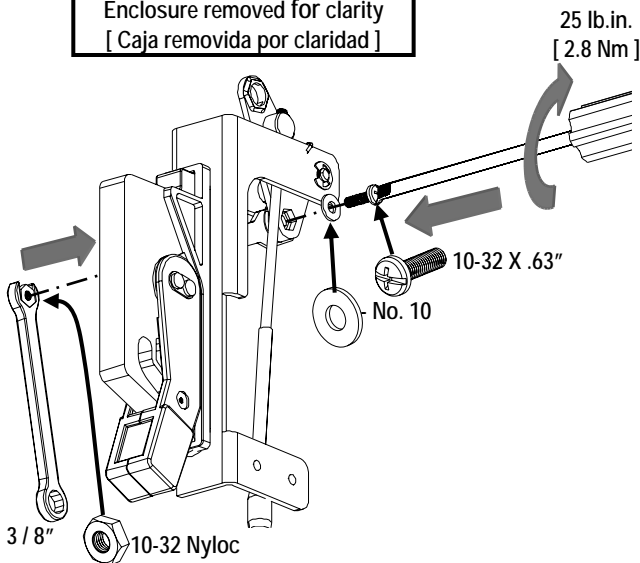
8 Enclosure removed for clarity  
[ Caja removida por claridad ]

9 Enclosure removed for clarity  
[ Caja removida por claridad ]



10 left hand side mounting  
[ Montaje de lado izquierdo ]  
Enclosure removed for clarity  
[ Caja removida por claridad ]

right hand side mounting  
[ Montaje de lado derecho ]  
Enclosure removed for clarity  
[ Caja removida por claridad ]



Go to 8/15 Step 16 [ Ir al 8/15 Paso 16 ]



### ⚠ Danger

Hazardous Voltage.  
Will cause death or serious injury.



Turn off and lock out all power supplying this device before working on this device.  
Replace all covers before power supplying this device is turned on.

### ⚠ Peligro

Tensión peligrosa.  
Puede causar la muerte o lesiones graves.

Desenergice totalmente antes de instalar o darle servicio.  
Reemplace todas las barreras y cubiertas antes de energizar el interruptor.

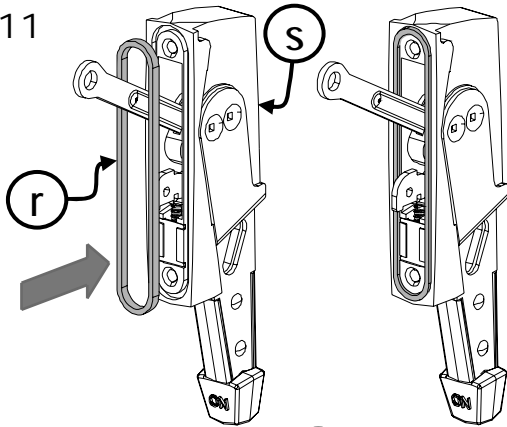
### ⚠ Danger

Tension dangereuse.  
Danger de mort ou risque de blessures graves.

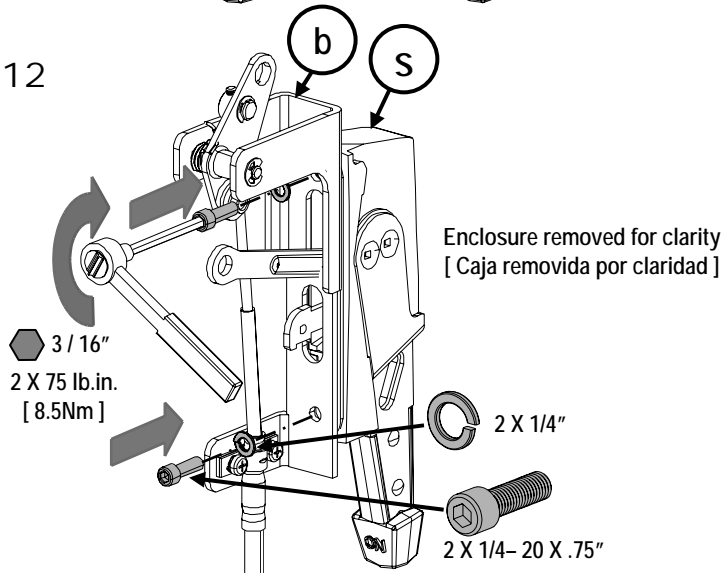
Couper l'alimentation de l'appareil et barrer avant de travailler.  
Remplacez tous les couverts avant que l'alimentation de pouvoir soit alimenté.

MFHM3RSB / 3VL9600-3JP61  
MFHM3RS / 3VL9600-3JP21  
MFHM4X / 3VL9600-3JP41

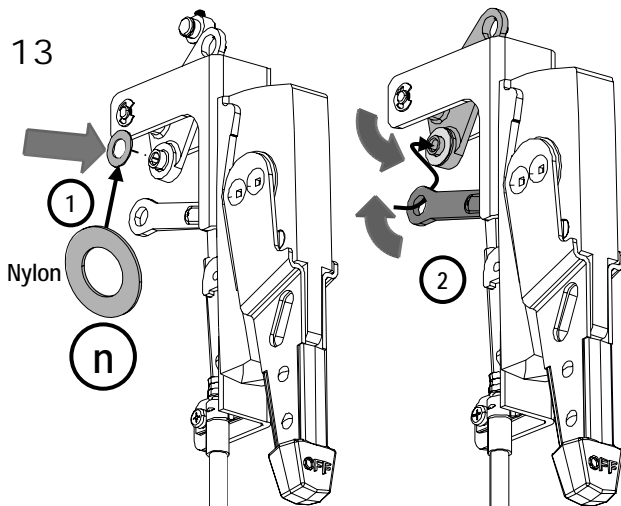
11



12



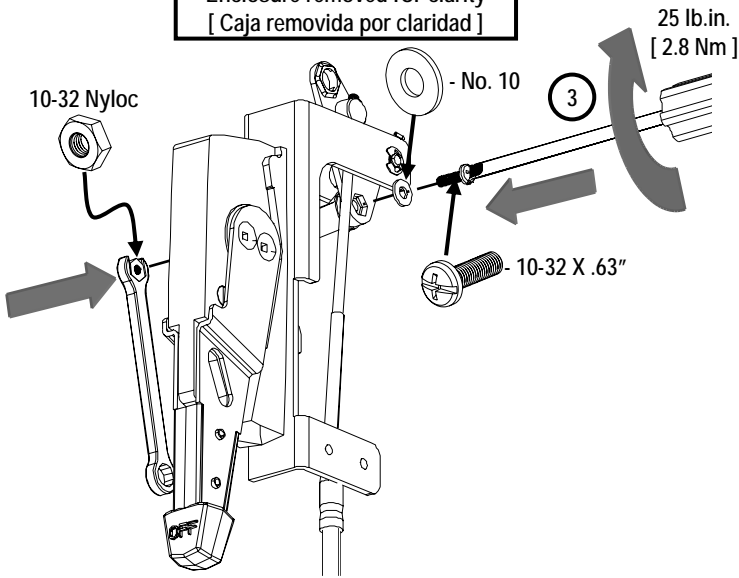
13



14

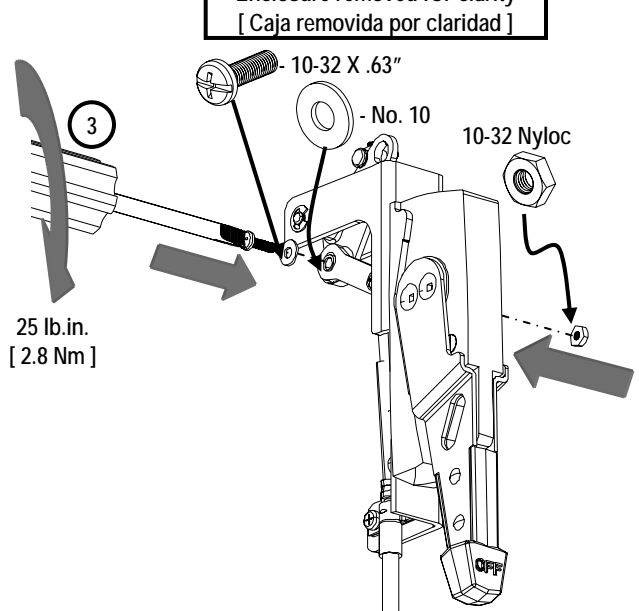
left hand side mounting  
[ Montaje de lado izquierdo ]

Enclosure removed for clarity  
[ Caja removida por claridad ]



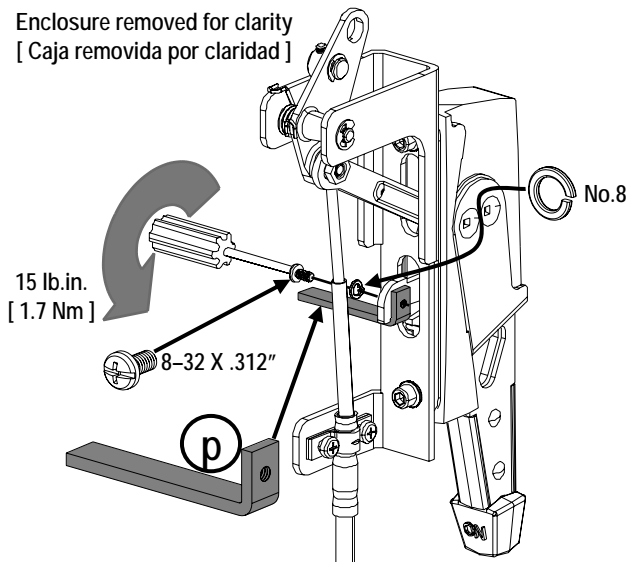
right hand side mounting  
[ Montaje de lado derecho ]

Enclosure removed for clarity  
[ Caja removida por claridad ]

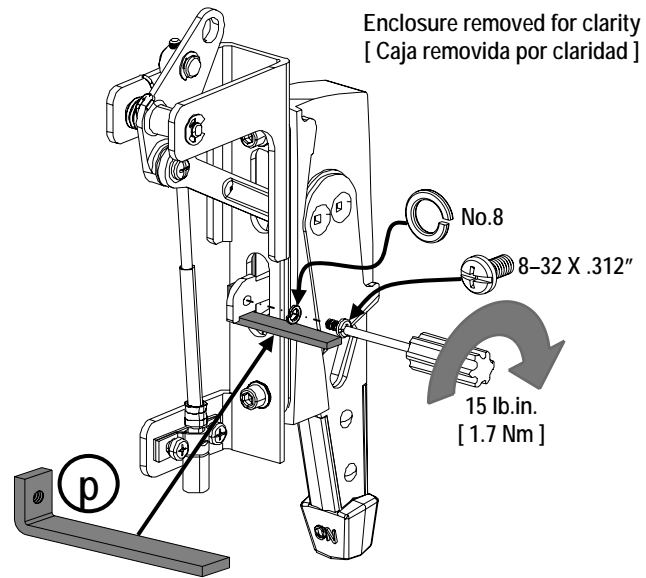


15

Enclosure removed for clarity  
[ Caja removida por claridad ]

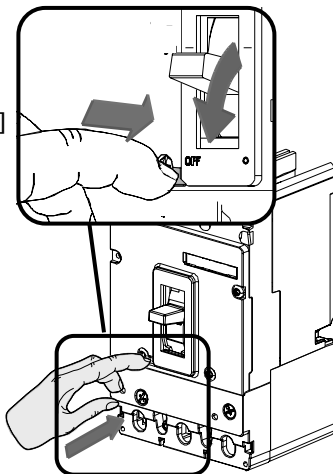


Enclosure removed for clarity  
[ Caja removida por claridad ]



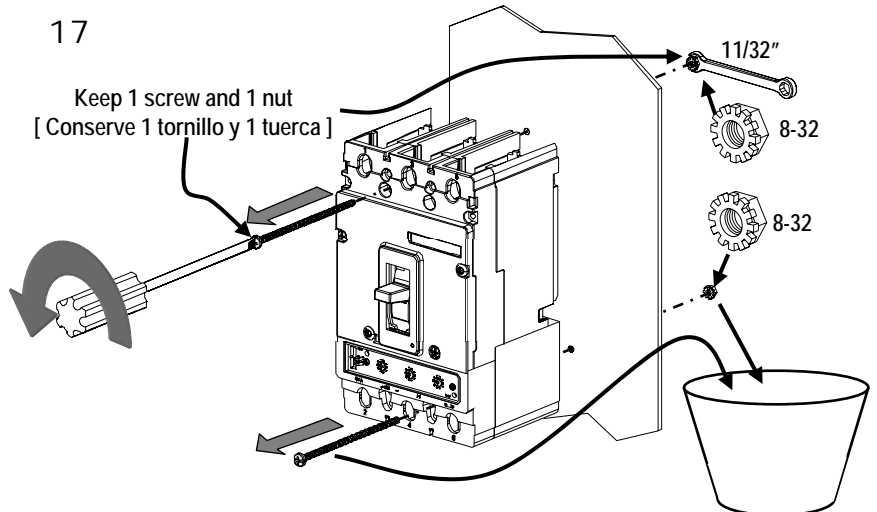
16

Trip  
[ Interrupir ]



17

Keep 1 screw and 1 nut  
[ Conserve 1 tornillo y 1 tuerca ]







### **⚠ Danger**

**Hazardous Voltage.**  
Will cause death or serious injury.



Turn off and lock out all power supplying this device before working on this device.  
Replace all covers before power supplying this device is turned on.

### **⚠ Peligro**

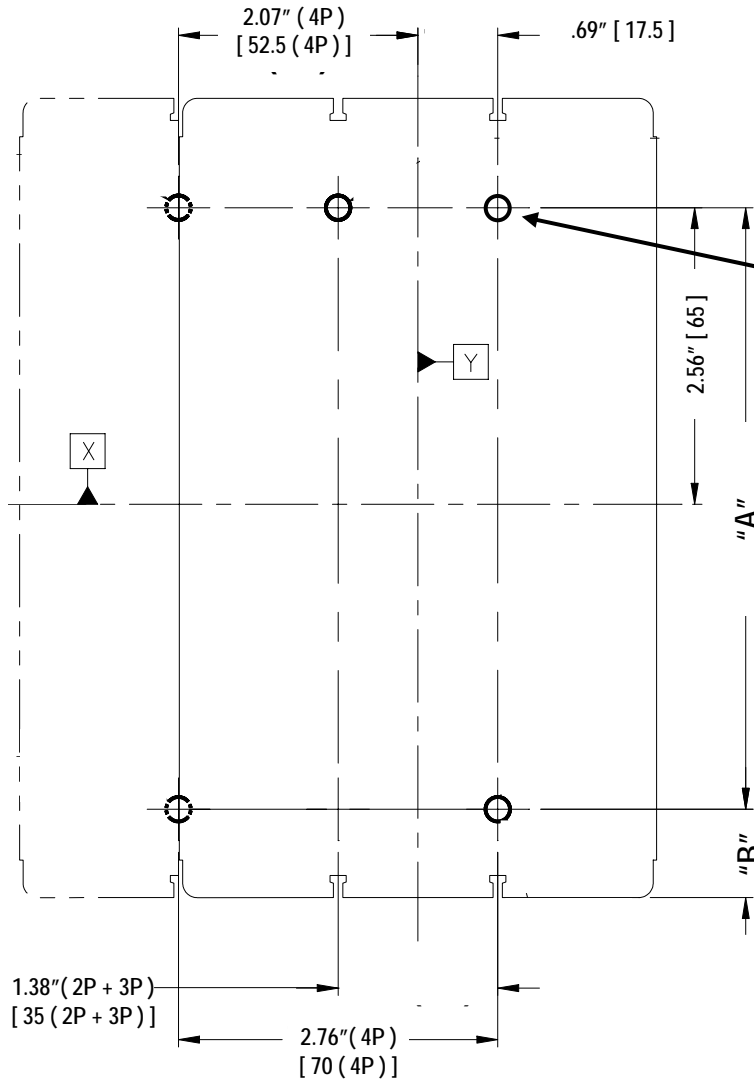
**Tensión peligrosa.**  
Puede causar la muerte o lesiones graves.

Desenergice totalmente antes de instalar o darle servicio.  
Reemplace todas las barreras y cubiertas antes de energizar el interruptor.

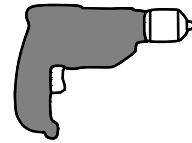
### **⚠ Danger**

**Tension dangereuse.**  
Danger de mort ou risque de blessures graves.

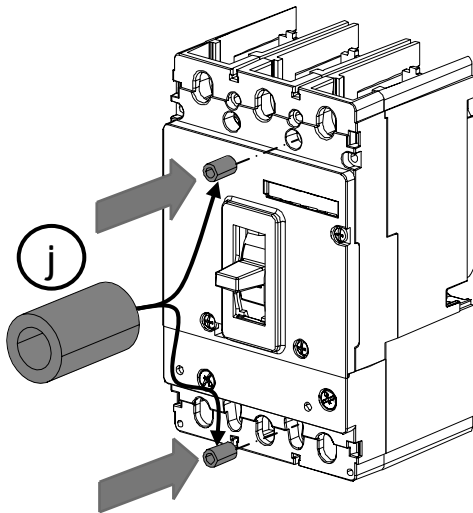
Couper l'alimentation de l'appareil et barrer avant de travailler.  
Remplacez tous les couverts avant que l'alimentation de pouvoir soit alimenté.



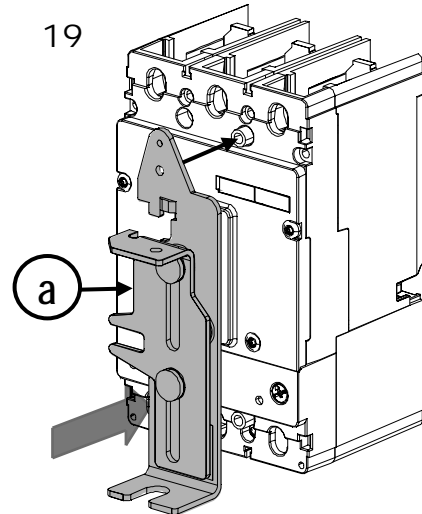
	CG Frame [ Caja Base ]	DG, FG Frame [ Caja Base ]
"A"	4.50" [ 114.5 ]	5.17" [ 131.5 ]
"B"	.94" [ 24 ]	.77" [ 19.5 ]

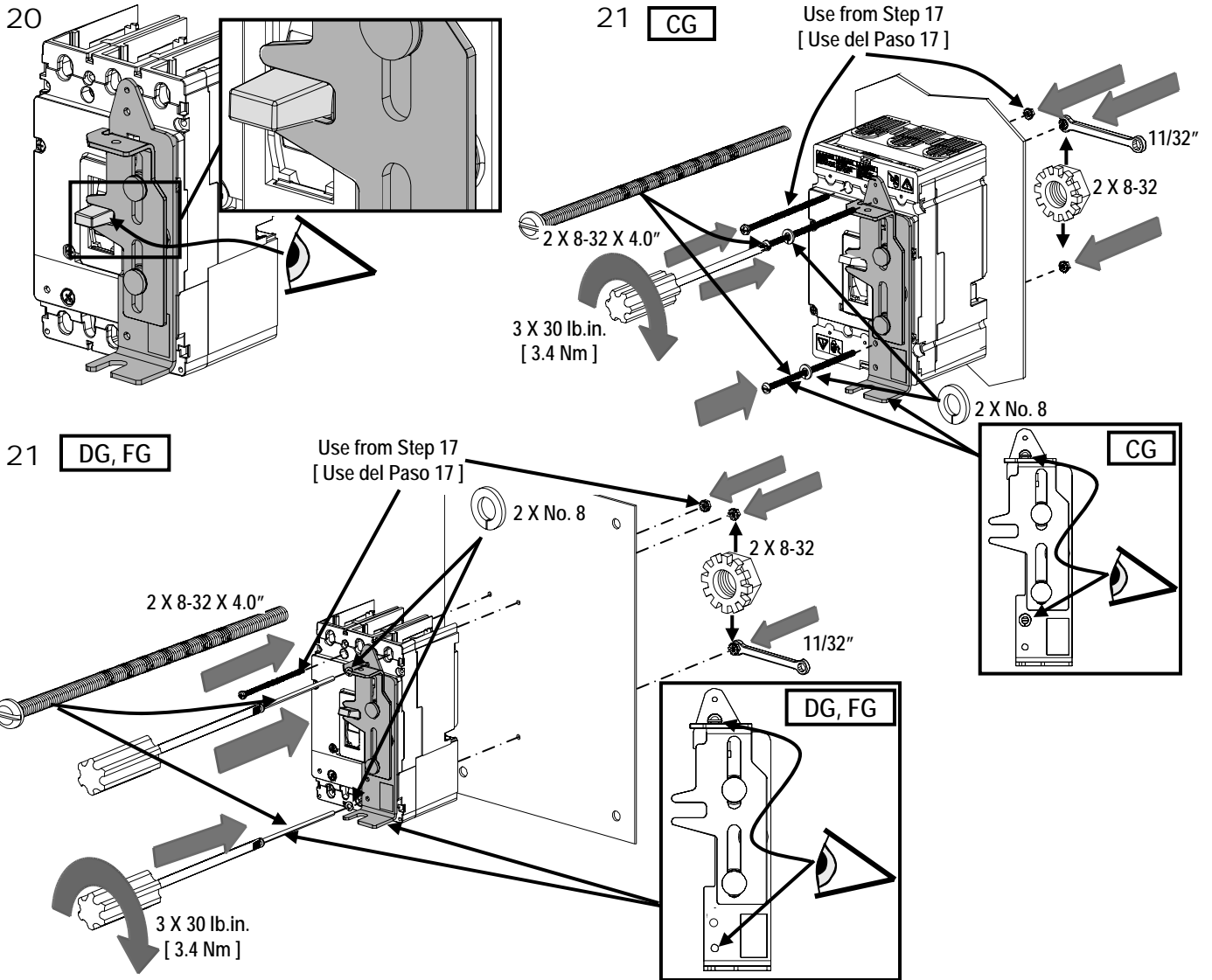


18

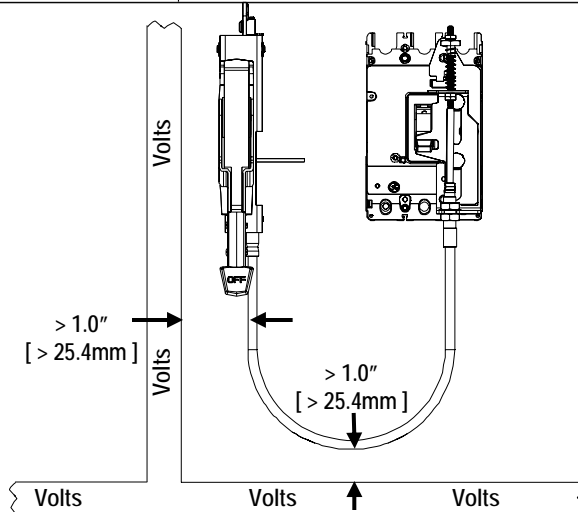


19



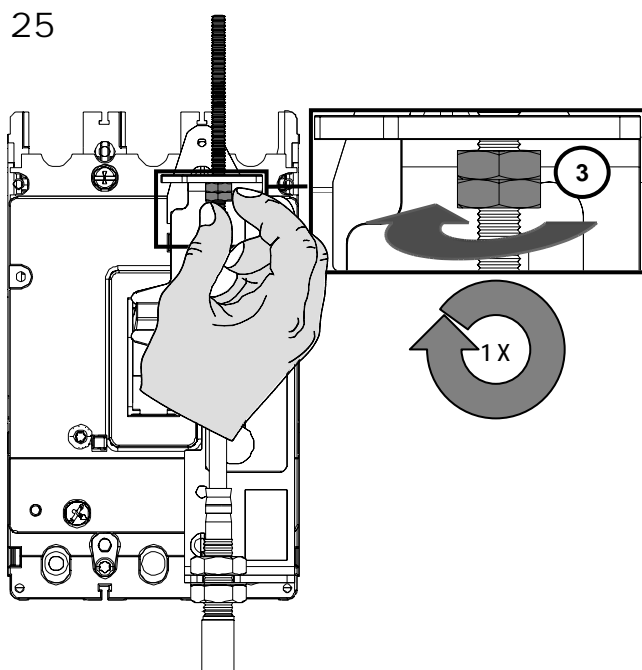
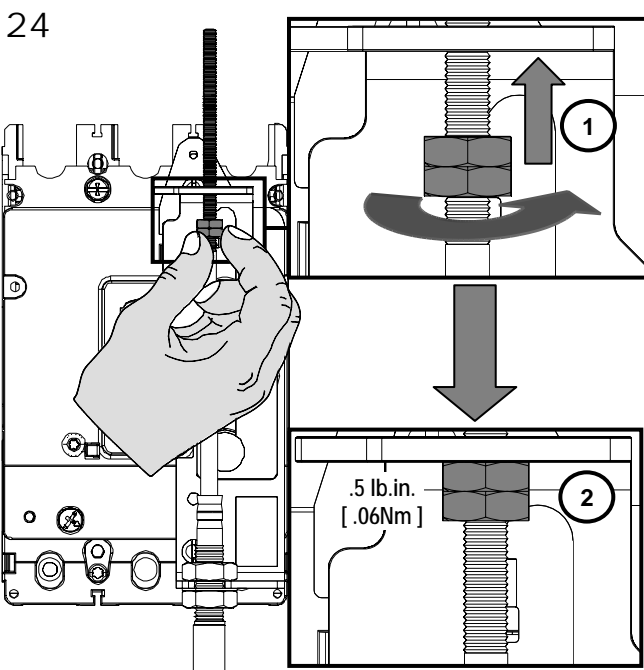
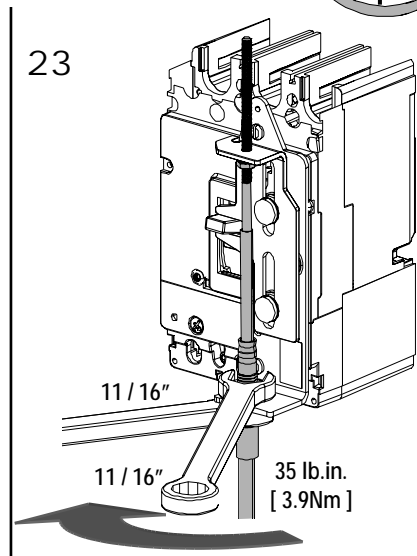
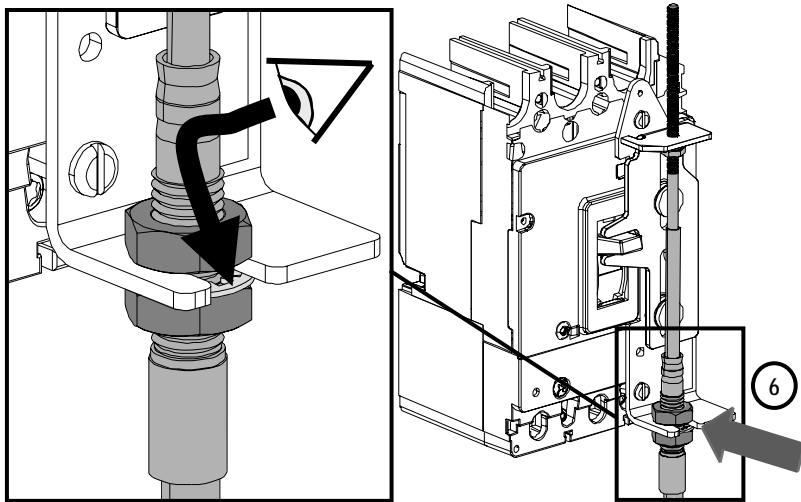
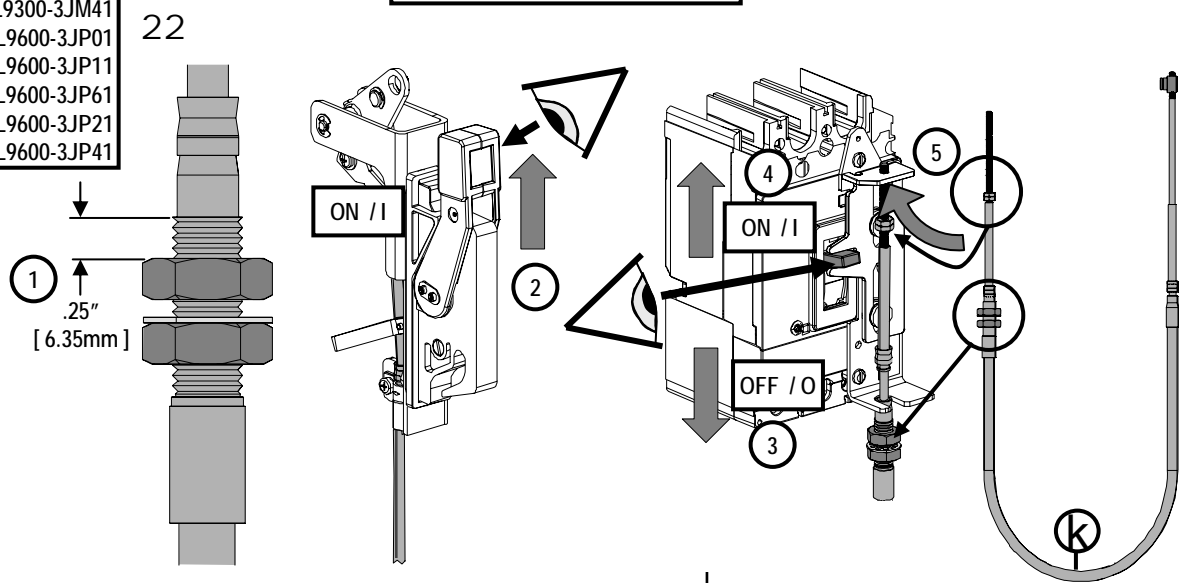


	<b>WARNING</b>	<b>ADVERTENCIA</b>	<b>AVERTISSEMENT</b>
	<b>Hazardous Voltage.</b>	<b>Tensión Peligrosa.</b>	<b>Tension dangereuse.</b>
	Can cause death or serious injury and Equipment Damage.	Puede causar la muerte o lesiones graves y daños al equipo.	Peut provoquer des blessures graves ou mortelles ou causer des dommages à l'équipement.
	Proper electrical clearances must be maintained	Las separaciones eléctricas adecuadas deben ser mantenidas.	Les dégagements électriques appropriés doivent être maintenus.



MFMF	3VL9300-3JN01
MFKF3R	3VL9300-3JM01
MFKF43R	3VL9300-3JM41
MFHM3R	3VL9600-3JP01
MFHM3RB	3VL9600-3JP11
MFHM3RSB	3VL9600-3JP61
MFHM3RS	3VL9600-3JP21
MFHM4X	3VL9600-3JP41

Ex: MFKM3R / 3VL9300-3JM01





### Danger

Hazardous Voltage.  
Will cause death or serious injury.



Turn off and lock out all power supplying this device before working on this device.  
Replace all covers before power supplying this device is turned on.

### Peligro

Tensión peligrosa.  
Puede causar la muerte o lesiones graves.  
Desenergice totalmente antes de instalar o darle servicio.  
Reemplace todas las barreras y cubiertas antes de energizar el interruptor.

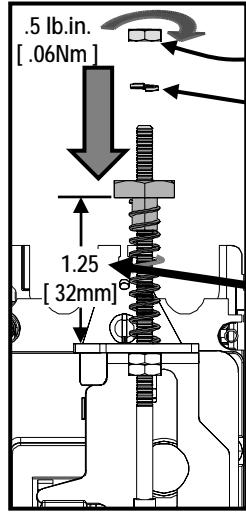
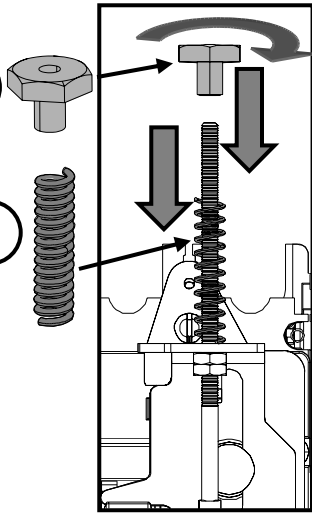
### Danger

Tension dangereuse.  
Danger de mort ou risque de blessures graves.  
Couper l'alimentation de l'appareil et barrer avant de travailler.  
Remplacez tous les couverts avant que l'approvisionnement de pouvoir soit alimenté.

26

(m)

(I)

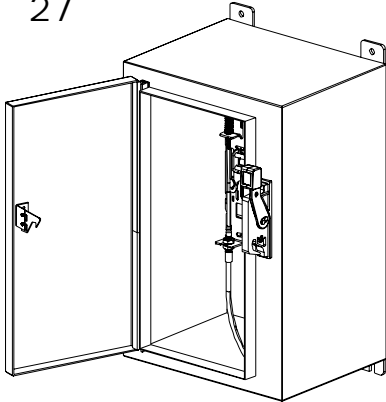


10 - 32

No.10

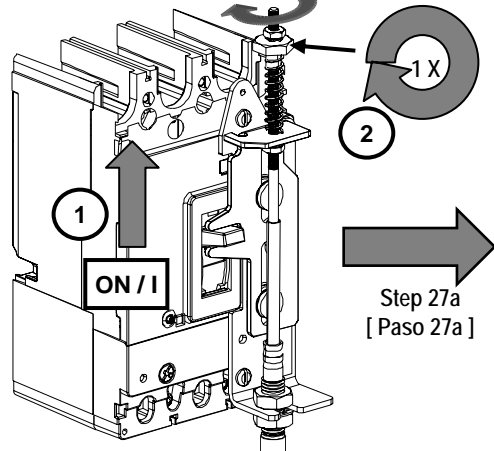
Test: ON / I – OFF / O  
[ Prueba: ON / I – OFF / O ]

27

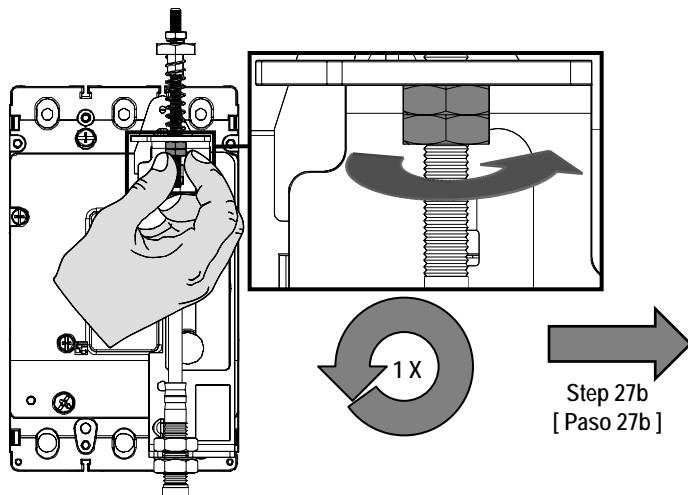


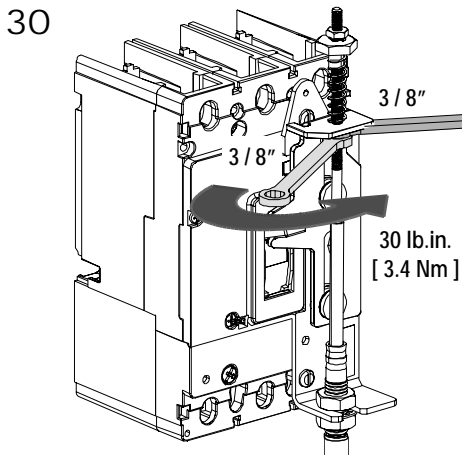
		Result [ Resultado ]		Go To [ Ir Al ]
27a	ON / I → OFF / O	OFF / O	OK	Test 27b [ Prueba 27b ]
		ON / I	OK	Step 28 [ Paso 28 ]
27b	OFF / O → ON / I	ON / I	OK	Step 30 [ Paso 30 ]
		OFF / O	OK	Step 29 [ Paso 29 ]

28

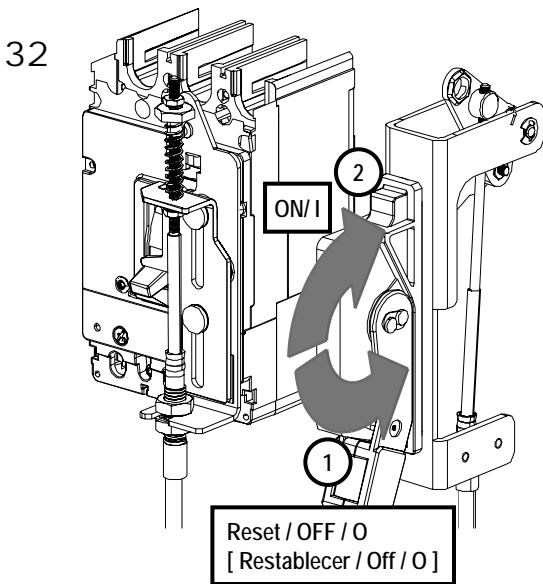
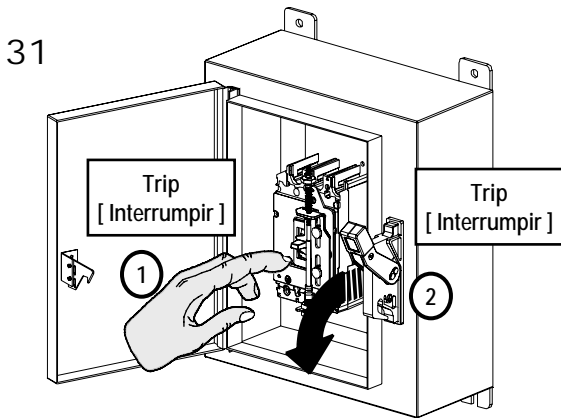


29





**Test: Reset**  
**[ Prueba: Restablecer ]**



	Result [ Resultado ]	Step [ Paso ]		
32a			OK	34
			OK	33



### **⚠ Danger**

**Hazardous Voltage.**  
Will cause death or serious injury.  
Turn off and lock out all power supplying this device before working on this device.  
Replace all covers before power supplying this device is turned on.

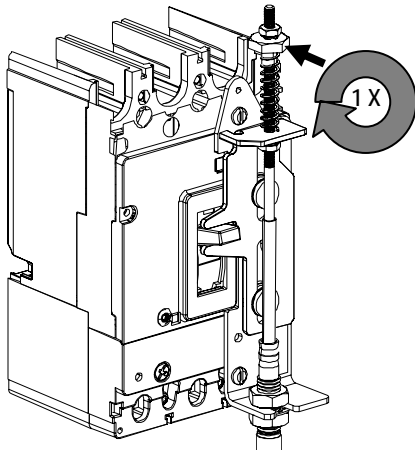
### **⚠ Peligro**

**Tensión peligrosa.**  
Puede causar la muerte o lesiones graves.  
Desenergice totalmente antes de instalar o darle servicio.  
Reemplace todas las barreras y cubiertas antes de energizar el interruptor.

### **⚠ Danger**

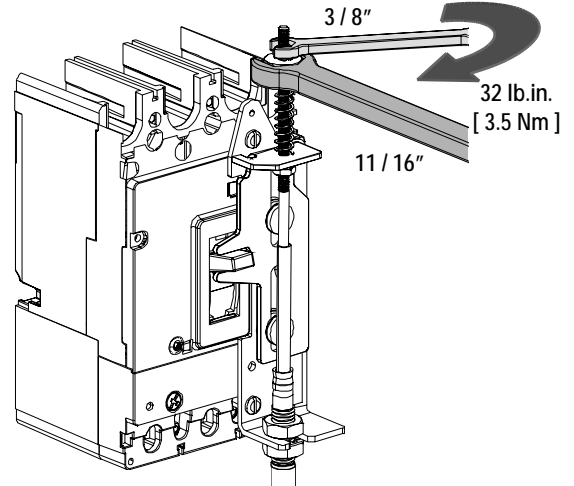
**Tension dangereuse.**  
Danger de mort ou risque de blessures graves.  
Couper l'alimentation de l'appareil et barrer avant de travailler.  
Remplacez tous les couverts avant que l'approvisionnement de pouvoir soit alimenté.

33



Step 32a  
[ Paso 32a ]

34

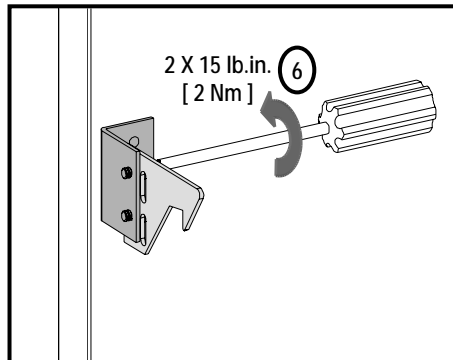
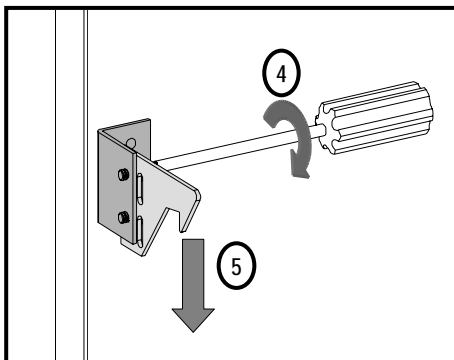


### **Test: Door Latch**

[ Prueba: Seguro de la Puerta ]

35			Result [ Resultado ]		Step [ Paso ]
			Open [ Abierta ]	Closed [ Cerrados ]	
	OFF/O → ON/I	5 lbf [ 22 N ]			37
					36

36



Step 35  
[ Paso 35 ]



**Danger**

**Hazardous Voltage.**  
Will cause death or serious injury.



Turn off and lock out all power supplying this device before working on this device.  
Replace all covers before power supplying this device is turned on.



**Peligro**

**Tensión peligrosa.**  
Puede causar la muerte o lesiones graves.

Desenergice totalmente antes de instalar o darle servicio.  
Reemplace todas las barreras y cubiertas antes de energizar el interruptor.



**Danger**

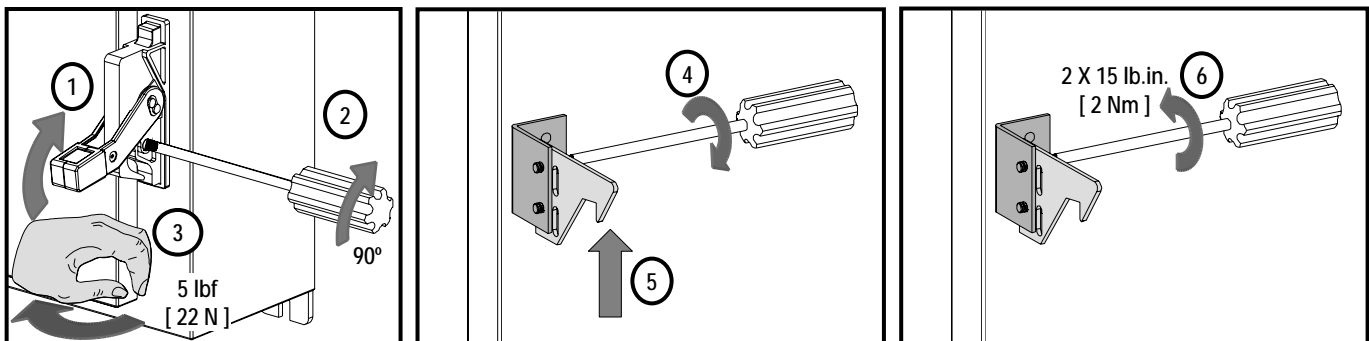
**Tension dangereuse.**  
Danger de mort ou risque de blessures graves.

Couper l'alimentation de l'appareil et barrer avant de travailler.  
Remplacez tous les couverts avant que l'alimentation de pouvoir soit alimenté.

37

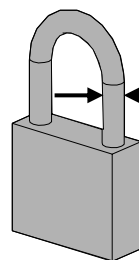
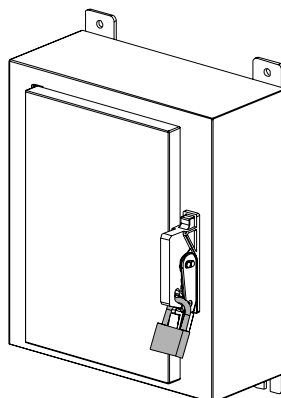
		<b>Result</b> [ Resultado ]		<b>Step</b> [ Paso ]
		 Open [ Abierta ]	 Closed [ Cerrados ]	
ON / I  OFF / O	5 lbf [ 22 N ]			38

38



Step 37  
[ Paso 37 ]

**Option:**  
[ Opción: ]



Ø.12" - .32" Max  
[ Ø3 - 8mm Max. ]

1 - 3X

**For Support in Europe refer to :**

Bestell-Nr. / Order No.: 3ZX1012-0VL68-2BA6

Internet: [www.siemens.de/lowvoltage/technical-assistance](http://www.siemens.de/lowvoltage/technical-assistance)

GWA 4NEB 179 6950-10 DS 03

**Technical Support:**

Toll Free: 1-800-241-4453

Internet: [www.usa.siemens.com/powerdistribution](http://www.usa.siemens.com/powerdistribution)

Subject to change without prior notice  
Siemens Industry, Inc., Norcross, GA 30092 U.S.A.