

## Catalog Numbers

Catalog No.	Amperage Rating	Max. Interrupting Rating
<b>1 PHASE, 3 WIRE, 120/240V AC MAX</b>		
WS1400CU	400	100,000
<b>3 PHASE, 4 WIRE, 240V AC MAX</b>		
WS3400CU	400	100,000

- FOR OVERHEAD OR UNDERGROUND SERVICE
- TYPE 3R OUTDOOR ENCLOSURE
- USE CLASS T (300V) FUSES ONLY

## Additional Modules, Accessories and Lug Kits

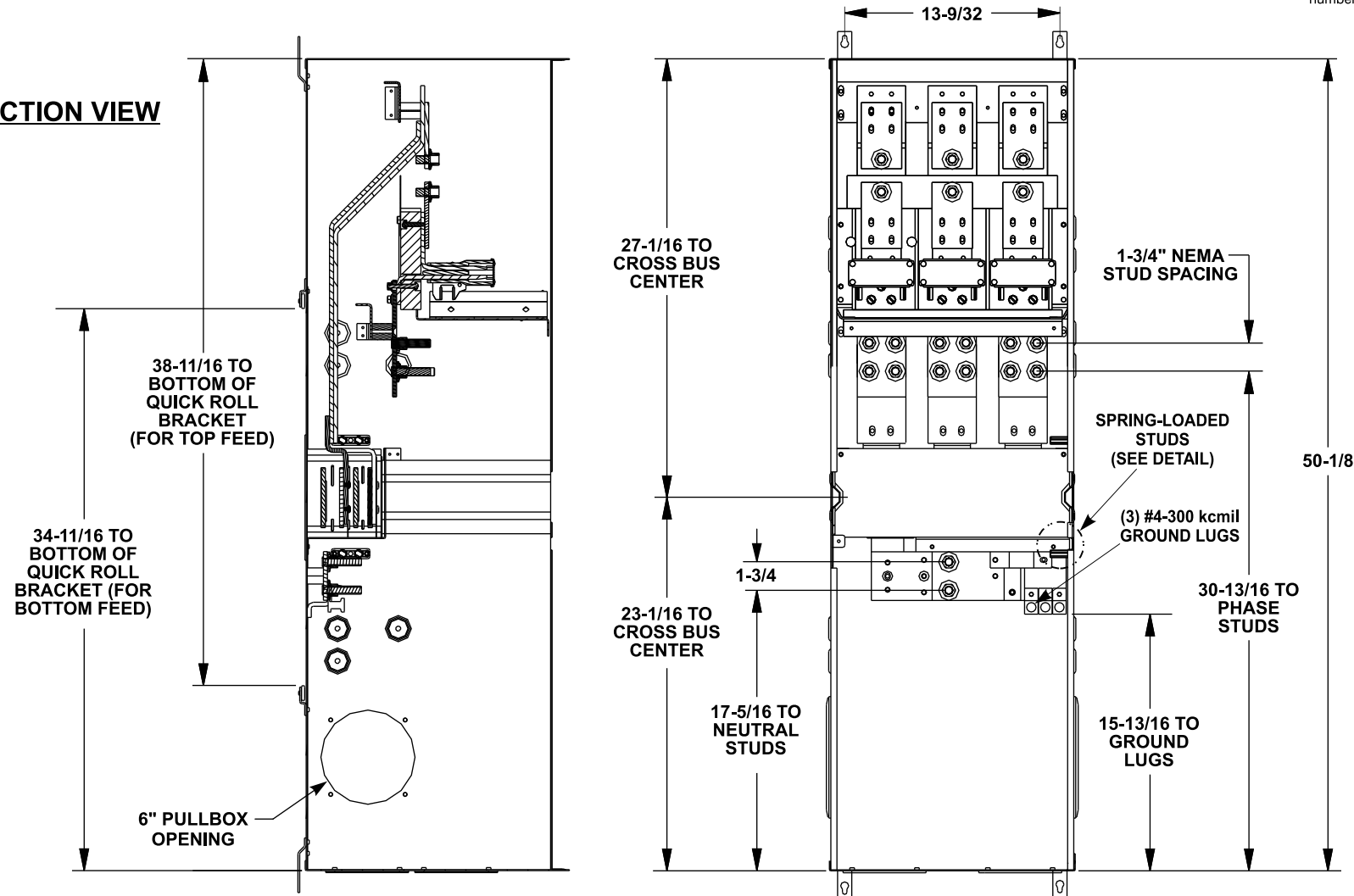
FOR USE WITH:	
Module Description	Siemens Series#
Main Breakers	(W)MC, WB, WEB, WXB
Switches	WMP, WMS, WS, WES
Tap/Terminal Boxes	WMTB, WTB, WET, WT PU
Pull Boxes	WMMB
Meter Module	(W)MM, WxMM, (W)MT, (W)ML, (W)MK
Meter Combinations	WC, WCL, WCT
Extension Box	WMEX, WSP, WSPD
Bussed Elbow	BE
Connect Modules Using	Catalog Number / Torque
QuickConnect	QC1 (1ph) or QC4 (3ph) 400-440 lb-in (35-36 ft.-lb.) Torque
Single Bolt Joint	SBJ1 (1ph) or SBJ4 (3ph) 400-480 lb-in (35-40 ft.-lb.) Torque

Siemens Accessories	Catalog Number
Hub Cover Plate	EC56933S
Type HD Hub 2"	EC56854
Type HD Hub 2-1/2"	EC56855
Type HD Hub 3"	EC56856
Type HD Hub 3-1/2"	EC56857
Type HD Hub 4"	EC56858

1 Phase: Lugs for Phase and Neutral Connections (not supplied)					
NEMA Lug <sup>①</sup>	MFG	Wire Range	Type	No. Wires per phase	Torque (lb.-in.)
LK11750N2	Siemens	300-750 kcmil	Mechanical	1	500
LK11600N2	Siemens	#2-600 kcmil	Mechanical	1	375
LK12500N2	Siemens	1/0-500 kcmil	Mechanical	2	500
2ACL-500	ILSCO	500 kcmil	Compression	2	NA <sup>②</sup>
2ACL-600	ILSCO	600 kcmil	Compression	1	NA <sup>②</sup>
2ACL-750	ILSCO	750 kcmil	Compression	1	NA <sup>②</sup>
3 Phase: Lugs for Phase and Neutral Connections (not supplied)					
LK31750N2	Siemens	300-750 kcmil	Mechanical	1	500
LK31600N2	Siemens	#2-600 kcmil	Mechanical	1	375
LK32500N2	Siemens	1/0-500 kcmil	Mechanical	2	500
2ACL-500	ILSCO	500 kcmil	Compression	2	NA <sup>②</sup>
2ACL-600	ILSCO	600 kcmil	Compression	1	NA <sup>②</sup>
2ACL-750	ILSCO	750 kcmil	Compression	1	NA <sup>②</sup>

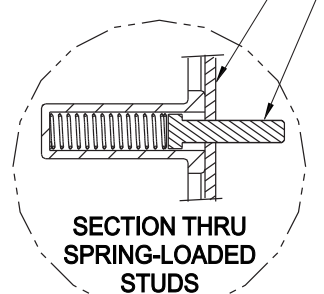
- ① Order one mechanical lug kit for main breaker and neutral conversions. Contact lug manufacturer for compression lug quantities supplied for each kit.  
② See lug manufacturer's instruction sheet supplied with the connector for tool, die, and number of crimps.

## SECTION VIEW

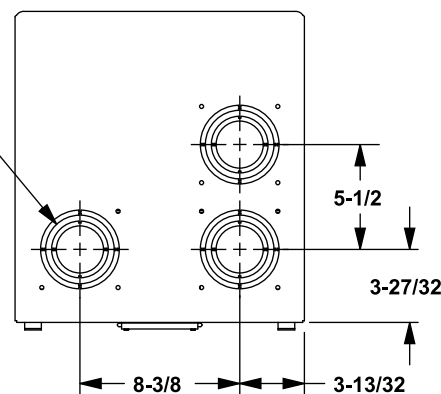


**WS3400CU (3 Phase) SHOWN**  
VIEWS SHOWN WITHOUT COVER  
SHOWN IN BOTTOM FEED POSITION

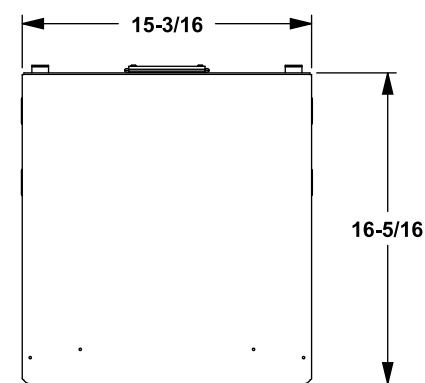
#10-32 x 7/8 SCREWS  
ENCLOSURE WALL



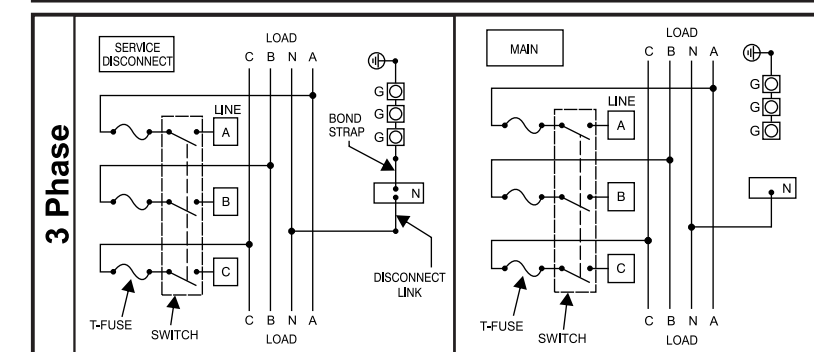
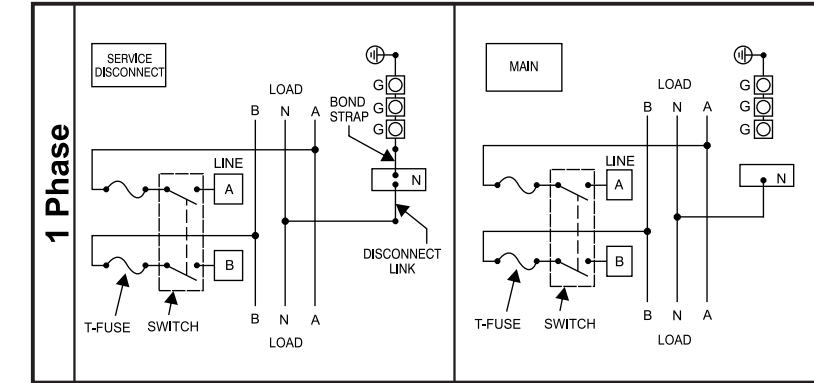
(3) TYPE "HD" 4" MAX  
HUB OPENINGS  
3-1/2, 3, 2-1/2, 2" KO's



## TOP VIEW



## Schematics



VIEW SHOWN WITH COVER

© 2015 Copyright Siemens Industry, Inc.

**SIEMENS**  
Siemens Industry, Inc.

**PowerMod™ Switch Mains**

Description: **WS1400CU thru WS3400CU  
Service Entrance Switch Mains**

KAM 10/6/15 DO NOT SCALE DRAWING Dwg. No. **400A\_SE\_Switch\_Mains**