

# Disconnect Switches

Type VB Panelboard Units, Accessories

Selection

## Extension Kits

To extend Vacu-Break unit's depth, order the extension kit which meets the specifications of the unit to be extended. Specify by catalog number from the table to the right.

Unit Type	Unit Height (inches)	Normal Unit Depth (inches)	Extended Unit Depth (inches)	Catalog Number
V2A	2½	4 <sup>9</sup> / <sub>16</sub>	6¾	W43000■
V2B	5	4 <sup>9</sup> / <sub>16</sub>	6¾	W43002
V7A	2½	6¾	10½	W48762
V7B	5	6¾	10½	W48763
V7E	7½	6¾	10½	W48764
V7F	10	6¾	10½	W48765®

## Fuse Adapter Kits

Class R and Class J Fuse Kits are single unit part numbers. Order (2) kits for dual units. Class T Fuse Kits are single pole part numbers. Order (3) kits for a 3-pole unit. To order the kit which meets the specifications of the unit to be changed, specify by catalog number from the tables below.

### 240 Volt Fuse Adapter Kits

Switch Amperage	Class R Kits	Class J Kits	Class T Kits
	Catalog Number	Catalog Number	Catalog Number
30 <sup>ⓐ</sup>	Factory Inst.	—	—
60	W56628	—	—
100	W55365	W49827	TFAK32
200	W55366	W49819	TFAK42
400	HR65A	— <sup>ⓑ</sup>	HT25A
600	HR66A	HJ66A <sup>ⓑ</sup>	HT26A

### 600 Volt Fuse Adapter Kits

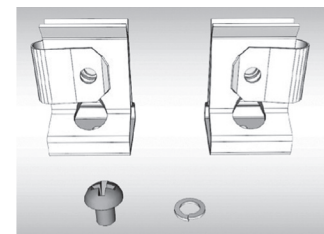
Switch Amperage	Class R Kits	Class J Kits	Class T Kits
	Catalog Number	Catalog Number	Catalog Number
30	W56623	W49832	—
60	W56629	W49830	—
100	W55365	W49828	TFAK35
200	W55366 <sup>ⓑ</sup>	W49818 <sup>ⓑ</sup>	TFAK45
400	HR65A <sup>ⓑ</sup>	HJ65A <sup>ⓑ</sup>	HT65A, HT265A <sup>ⓑ</sup>
600	HR66A	HJ66A	HT66A
800	—	—	TFAK75

## Vacu-Break Connecting Strap Kits For Panelboards and Switchboards

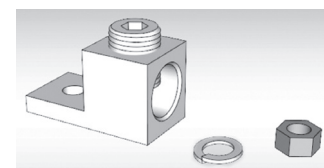
Ampere Rating	240V Unit Height (inches)	600V Unit Height (inches)	P4/S4/F1, FPP (10" Deep) Strap Kit	P5/S5/F2 (12.75" Deep) Strap Kit	SB1, SB2, SB3, VB-5, VB-6, Strap Kit
30-30	2.5	—	F602	F602D	—
30-30	5	7.5	F657	F657D	VB657
30-60	5	7.5	F657	F657D	VB657
60-60	5	7.5	F657	F657D	VB657
60-100	7.5	7.5	F657	F657D	VB657
100-100	7.5	7.5	F657	F657D	VB657
100	7.5	7.5	F657	F657D	VB657
200	7.5, 10	7.5, 10	F671	F671D	VB671
200-200	10	10	F672	F672D	VB610

## Ordering Information

Catalog Number	Description
<b>Fuse Clip Kits</b>	
VBFLC3 <sup>Ⓓ</sup>	100A for V2E & V7E units (6) fuse clips per kit
VBFLC4 <sup>Ⓔ</sup>	200A for V2E, V2F, V7E & V7F units (6) fuse clips per kit
<b>Lug Kits</b>	
VBRL4	200A for V2F, V7E & V7F units (3) lugs per kit
V7HBB65A <sup>ⓓ</sup>	Replacement lug base for 400A standard height (15") Series A
V7FBB65A <sup>ⓓ</sup>	Replacement lug base for 400A compact height (10") Series A
V7HBB66A <sup>ⓓ</sup>	Replacement lug base for 600A Series A
<b>Handle Kits</b>	
VBRHK1232	100A for twin V2E & V7E units (2) handles per kit
VBRHK41	200A for single V2E, V2F, V7E & V7F units (1) handle per kit
VBRHK42	200A for twin V7F units (2) handles per kit



VBFLC4



VBRL4



VBRHK41

For inches / millimeters conversion, multiply inches by 25.4.

■ Built to order. Allow 2-3 weeks for delivery.

● A suffix. New 'Series A' design

Ⓐ For 200 A single units only. Dual units are suitable for Class J only, when used above 240V.

Ⓑ 5" unit height switches only.

Ⓒ For single units only.

Ⓓ Fuse clips provided can be used on both the line and load sides.

Ⓔ Three line and three load fuse clips are provided.

Ⓕ Kit not required for branch circuit switch, relocate lug base to achieve fuse fit

Ⓖ J fuse option not available for 240V main switch

Ⓗ Lug base relocation plus kit required for branch circuit switches

Ⓘ Kit required for main switch only

ⓓ HT265A required for V7F3605A

ⓔ One lug base required per switch

ⓕ Not for use on V7F3605A

ⓖ Not for use on V7F3605A or V7F3205A